

# GROVE CITY SUSTAINABILITY PLAN

NOV 2019



**G** SUSTAINABLE  
GROVE CITY

# Acknowledgements

## Contents

<b>1. INTRODUCE</b>	<b>4</b>
Background	6
Public Engagement	12
Grove City Today	14
<b>2. INTEGRATE</b>	<b>16</b>
Cross-Cutting Topics	18
<b>3. ENHANCE</b>	<b>22</b>
Built Environment	24
Natural Environment	28
<b>4. ADAPT</b>	<b>32</b>
Energy	34
Transportation	38
Waste Reduction & Recycling	44
<b>5. REFINE</b>	<b>48</b>
City Operations	50
Business Practices	54
<b>6. IMPLEMENT</b>	<b>58</b>
<b>7. APPENDIX</b>	<b>74</b>



# 1

## INTRODUCE

- Background .....6
- Public Engagement ..... 12
- Grove City Today..... 14



# Background

Sustainable Grove City is a comprehensive sustainability plan that will guide Grove City's sustainability efforts to ensure a more environmentally conscious and prosperous community. The Plan provides a framework for building on the City's current efforts in order to continue to be an environmental leader and to promote green practices for residents and businesses. It summarizes the City's efforts until now and outlines actions that the City can take to ensure a balance of its economic, social and environmental needs for the future.

The plan provides best practices, policy guidance and measurable actions to address sustainability opportunities in energy, natural resources, the built environment, economic development, transportation and waste reduction and recycling.

# 7

## Topics of Interest

guiding the City's sustainability efforts

# 3

## Crosscutting Themes

woven throughout the plan

# 32

## Action Items

recommended to ensure a more sustainable future

## Why now?

In 2017, Grove City passed a resolution (CR-41-17) to commit to the Mid-Ohio Regional Planning Commission (MORPC)'s Sustainability2050 Program. MORPC has certified Grove City as a Sustainable2050 community and has recognized the City's sustainability practices, such as promoting alternative fuel vehicles and electric charging stations, adopting an Idle-Free policy, and hosting the annual EcoFest. Grove City was awarded the Gold Sustainable2050 tier status in February, 2019 and Grove City is committed to achieve Platinum tier status by June 30, 2020.

## Who's involved?

### Environmental Sustainability Committee

As part of the City's efforts to achieve Platinum status, Grove City established the Grove City Environmental Sustainability Committee. The Committee is made up of Grove City community

members and representatives from businesses in Grove City that have sustainable practices. Each member brings a unique background and skill set that enables the plan's initiation, completion, and implementation.

Together with consultants from The Ohio State University, City and Regional Planning Department's Sustainability Studio, the Committee designed actions and objectives for this plan with input from the public.

### The Community

An essential component of the Sustainable Grove City is the insight of the people who live, work and raise families in Grove City. Members of the community were able to share comments and ideas both in-person and online. As a result of this collaborative process, a shared sense of responsibility for implementation has been cultivated to guide Grove City towards a more sustainable future.

## Sustainable2050 Program

Supports MORPC member communities' sustainability efforts through direct technical assistance, collaboration, and recognition.



MORPC Chair Rory McGuiness, Grove City Council Member Roby Schottke, Grove City Economic Development Manager Dan Havener, Sustainability Advisory Committee Vice Chair Mike Compton, MORPC Planning & Sustainability Director Kerstin Carr.

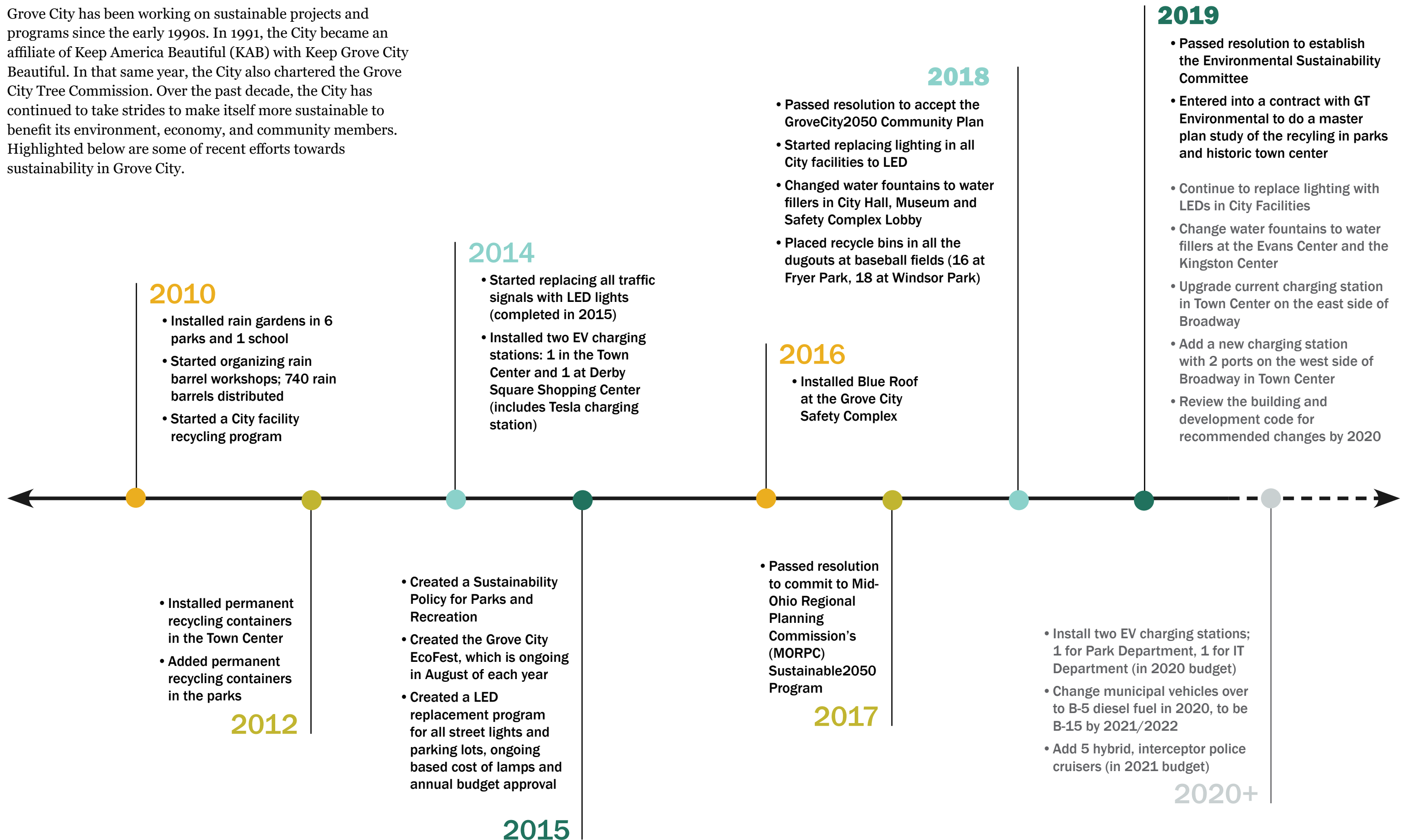
### Grove City 2050

Grove City 2050 is a community-focused planning tool used to update the City's plans and policies and proactively shape where and how the community will grow.

Growth is an important part of sustainability as recognized in the Grove City 2050 Plan. It's Land Use Objective 6 is to be a regional leader in sustainable development. Additionally, the plan was featured as part of the 2007 Summit on Sustainability Key Note Luncheon from the aspect of sustainable land use practices.

# Existing Projects and Programs

Grove City has been working on sustainable projects and programs since the early 1990s. In 1991, the City became an affiliate of Keep America Beautiful (KAB) with Keep Grove City Beautiful. In that same year, the City also chartered the Grove City Tree Commission. Over the past decade, the City has continued to take strides to make itself more sustainable to benefit its environment, economy, and community members. Highlighted below are some of recent efforts towards sustainability in Grove City.



## 2010

- Installed rain gardens in 6 parks and 1 school
- Started organizing rain barrel workshops; 740 rain barrels distributed
- Started a City facility recycling program

- Installed permanent recycling containers in the Town Center
- Added permanent recycling containers in the parks

## 2012

- Created a Sustainability Policy for Parks and Recreation
- Created the Grove City EcoFest, which is ongoing in August of each year
- Created a LED replacement program for all street lights and parking lots, ongoing based cost of lamps and annual budget approval

## 2014

- Started replacing all traffic signals with LED lights (completed in 2015)
- Installed two EV charging stations: 1 in the Town Center and 1 at Derby Square Shopping Center (includes Tesla charging station)

## 2015

## 2018

- Passed resolution to accept the GroveCity2050 Community Plan
- Started replacing lighting in all City facilities to LED
- Changed water fountains to water fillers in City Hall, Museum and Safety Complex Lobby
- Placed recycle bins in all the dugouts at baseball fields (16 at Fryer Park, 18 at Windsor Park)

## 2016

- Installed Blue Roof at the Grove City Safety Complex

- Passed resolution to commit to Mid-Ohio Regional Planning Commission's (MORPC) Sustainable2050 Program

## 2017

- Install two EV charging stations; 1 for Park Department, 1 for IT Department (in 2020 budget)
- Change municipal vehicles over to B-5 diesel fuel in 2020, to be B-15 by 2021/2022
- Add 5 hybrid, interceptor police cruisers (in 2021 budget)

## 2019

- Passed resolution to establish the Environmental Sustainability Committee
- Entered into a contract with GT Environmental to do a master plan study of the recycling in parks and historic town center
- Continue to replace lighting with LEDs in City Facilities
- Change water fountains to water fillers at the Evans Center and the Kingston Center
- Upgrade current charging station in Town Center on the east side of Broadway
- Add a new charging station with 2 ports on the west side of Broadway in Town Center
- Review the building and development code for recommended changes by 2020

## 2020+

# Organizing the Plan

## Topics

The Plan includes more than 30 actions that relate to a variety of subjects. For the purposes of this plan, sustainability actions have been organized into seven categories: built environment, natural environment, energy, transportation, waste reduction, business practices and city operations.

In addition to these categories, there are three cross-cutting themes: health and safety, equity and community engagement. The cross-cutting themes connect to all of the seven categories and the action items within each category are designed to provide positive benefits inline with these themes. For the community engagement theme, there were additional action items related to the topic that did not fall within another category. Therefore, these are shown in the cross-cutting themes section of the plan. The

seven main topics each have its own section that further explores actionable items, examples from peer cities and implementation time line. Following the sections on each category is an implementation matrix, which highlights a timeline and plan for implementing the suggested action items.

## Related Topics

The seven categories and three cross-cutting themes cannot encompass every aspect of sustainability and some actions may appropriately fit into multiple categories. Each topic has a corresponding symbol (outlined below) and the presence of these symbols next to an action item signifies a connection between that action item and another topic or cross-cutting theme.

### TOPICS



### CROSS-CUTTING TOPICS



## Topic Content

### Action

An **action item** is a clearly defined task that must be accomplished in order to achieve a goal. In this plan, action items are precise projects, policies or programs that are aligned with the best practices and will help Grove City to achieve sustainability goals. Each action item also identifies a responsible party and timeline for implementation.

### Best Practices

A **best practice** is a method or technique that has been accepted in a field as the most effective approach since it achieves superior results. Often times it is seen as a standard in the field and utilized by others in the field. In this document, the best practices provided, through peer city examples, represent standards in the sustainability field or examples from other cities that have yielded positive results.

## Implementation

Implementation is a key component of the Sustainable Grove City Plan. The action items in each chapter identify recommended projects, policies and programs to improve efforts across the 7 categories and 3 cross-cutting themes. While reading through the actions, it is important to keep implementation in mind, specifically how to achieve these actions and in what timeframe it might be feasible. At the end of the plan, there is an implementation matrix that is designed to help implement these action items into practice. It outlines each action item, an incremental timeline for implementation, metrics to measure the success of the implementation and responsible parties.

**See page XX for more details.**

## Action Cheat Sheet





# Public Engagement

## In-Person Meeting

On October 9th, community members were invited to a meeting facilitated by The Ohio State University, City and Regional Planning Department's Sustainability Studio. Community members joined conversations on a variety of sustainability topics such as energy, waste reduction, and natural environment. During these conversations, participants were asked to brainstorm action items related to these topics. At the end of the meeting, community members could view all the actions and individually identify the actions that they thought were most important. This input helped inform the plan by identifying areas that were a priority to the community.



Community and committee members prioritize actions that were brainstormed during the charette.

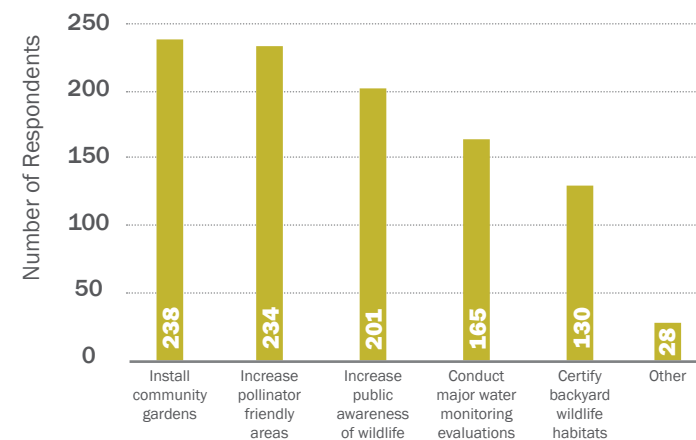


Participants look at a variety of actions and decide in which category they belong.

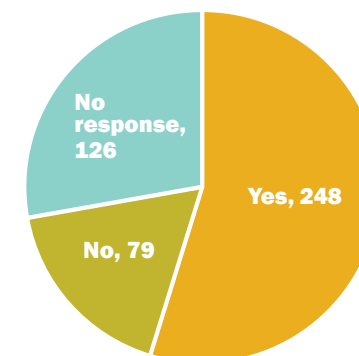
## Online Survey

Following the meeting, a survey containing questions related to plan topics was shared with the Grove City community. The survey was available for a week and there were over 500 responses. Selected survey results are shown below. See appendix for full responses.

What types of programs would you like to see the City foster to maintain sustainable habitats and encourage a healthy, balanced environment?



Would you like to see Grove City implement a Sustainable Checklist for current businesses and future development to assess and score the sustainability of a development in categories such as green roofs and LEED certification, etc.?

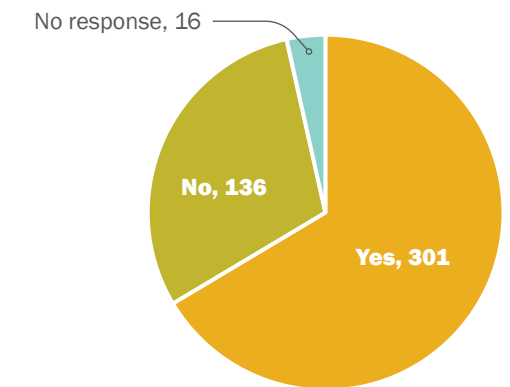


## Who We Heard From

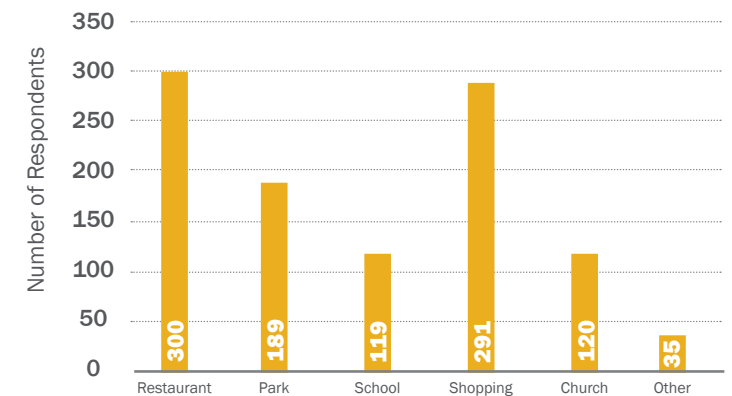
- Over half of the respondents were in the age group 30-64.
- About 93% of respondents lived in Grove City, while 38% worked in Grove City
- 30% of respondents have lived in Grove City for 20 years or more

See appendix for more details.

Would you be interested in a city-wide composting program?



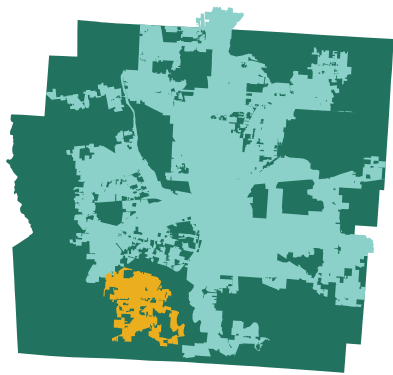
What community assets do you travel to most often?



# Grove City Today

The following presents demographic information regarding the composition of Grove City residents. This information is provided in this document as it is important to keep in mind the varying backgrounds of community members while trying to plan for a more sustainable Grove City. This plan provides valuable information and suggestions for Grove City community members of all backgrounds, ensuring that all people can benefit from a more sustainable city.

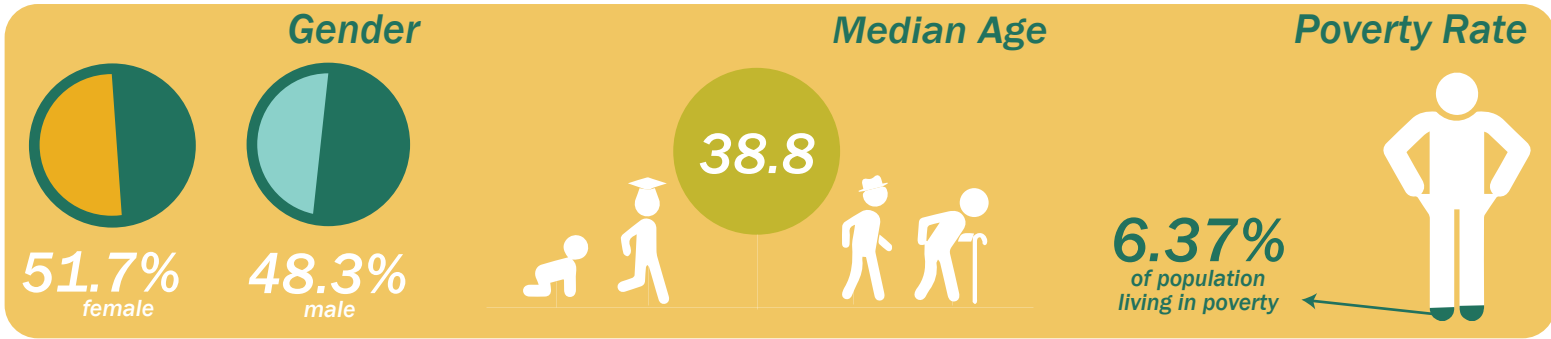
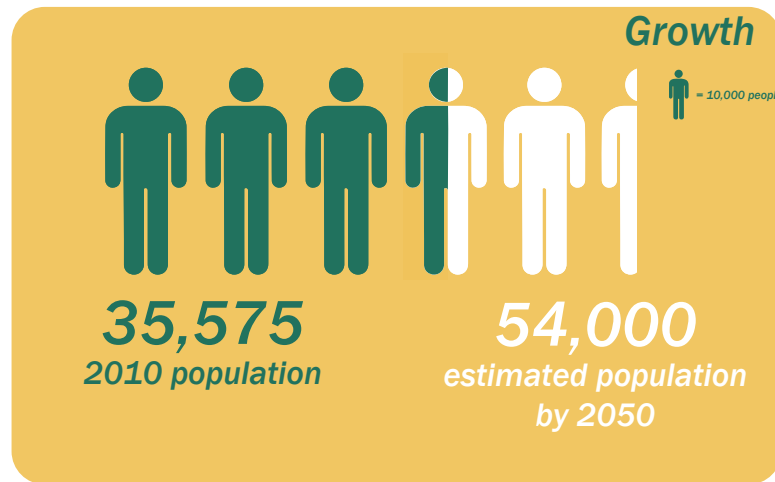
## PEOPLE



**Population**  
**1,310,300**  
 Franklin County

**892,533**  
 Columbus

**41,625**  
 Grove City



## PLANET

**3233** tons of recycling and

**2507** tons of yardwaste diverted

**28%** annual curbside diversion rate compared with 23% in 2016



## Tree Canopy



**340**  
 trees planted every year on average

**21**  
 public parks

**260**  
 acres of park space

**135**  
 acres of public open space



## Connectivity



**2 bus routes**  
 with fixed route and express service

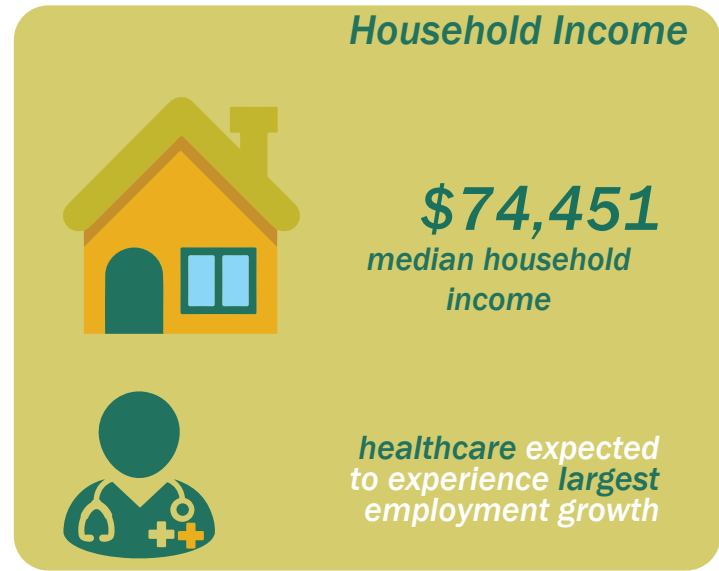
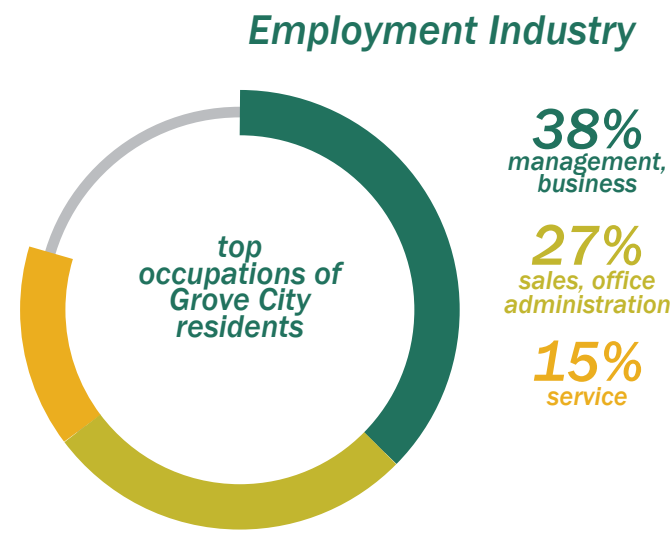


**200 miles**  
 of private roads



**49 miles**  
 of bikeways

## PROFIT



## Employment

**22,700**  
 residents of working age

**21,000**  
 in the workforce

**800**  
 without jobs

**3.7%**  
 unemployment rate





# 2

## **INTEGRATE**

Cross-Cutting Topics..... 18

*The following section highlights topics that are important to consider as a part of each of the seven categories. These cross-cutting themes have action items of their own, but are deeply dependent or connected with another category. Throughout the remainder of the plan, these themes will be integrated into action items and implementation strategies.*



# Cross-Cutting Topics

Health and Safety, Equity and Community Engagement are important aspects of sustainability that intersect with the 7 main topics of this plan. Because they are cross-cutting in nature, Health and Safety, Equity and Community Engagement are described below, but incorporated in many of the action items throughout the plan.



## Health & Safety

Grove City's sustainability performance is dependent on the state of its natural environment and quality of life for community residents. Improving the health, welfare, and safety of Grove City for residents will result in a more sustainable environment. As a cross-cutting theme, health and safety sustainability practices can be applied to the seven categories. Public health initiatives can be incorporated into sustainable practices for the natural environment, equity, and community engagement. Public safety issues can be addressed in transportation, the built environment, and city operations. Enhancing infrastructure within the built environment, promoting healthier modes of transportation, using energy-efficient technology, and the active preservation of natural resources are all important ways to influence public health and safety.



## Equity

The development and successful adoption of sustainability plans can be bolstered by the consideration and inclusion of environmental justice principles and standards. According to the U.S. Environmental Protection Agency (EPA), environmental justice is defined as “the fair treatment and meaningful involvement of all people regardless of race, color, national origin, or income, with respect to the development, implementation, and enforcement of environmental laws, regulations, and policies” (EPA, 2019). Ensuring that all members of the Grove City community receive fair access to resources and opportunities is vital and includes full participation and/or consideration in the development of this sustainability plan, as well as specific initiatives. Since equity is an important part of every aspect of sustainability, principles of environment justice are woven throughout each of the seven categories and the implementation plan.



## Community Engagement

The key to long term sustainability is community engagement. Community engagement can be presented in a variety of ways and involves the collaboration of different organizations, institutions, and individuals to achieve a common goal. Community involvement can be represented through city events, educational programs, and community forums, among others. Improving communication and strengthening relationships within the community will not only increase a sense of place, but it will also improve the overall quality of life in the community. Engagement brings meaning and relevance to sustainability goals across a broad spectrum of players, and it encourages local innovations in sustainable development through creative problem solving.

### Successful Engagement

#### EcoFest

- The purpose of EcoFest is to encourage a healthier community by using education and experience to promote sustainability and innovation.

#### Community Environmental Day

- Grove City/Jackson Township residents join together to dispose of unwanted household items such as electronics, documents, appliances, construction materials, tires, and yard waste.

## Action Items

### RELATED TOPICS



### PEER CITY EXAMPLES

#### Dublin, OH

*The City puts all of its sustainability events on Eventbrite, making them easy to find and attend.*

### CE.1 Improve social media and publication presence involving sustainability topics, events, and progress.

#### Short-term

In addition to workshops, Grove City can capitalize on its strong online and social media presence to bring awareness to sustainability topics and educate citizens. Having a dedicated web page to house all things sustainability on Grove City's web site can be a one-stop-shop resource for community members, making adopting sustainability practices into their everyday life or learning about upcoming events easy. Grove City should also strive to have a dedicated sustainability page in Discover Grove City Magazine.

#### Who's Responsible?

The Community Relations Department would be responsible for this action.

RELATED TOPICS



PEER CITY EXAMPLES

**Cleveland, OH**

*The City has several sustainability-related programs that provide residents with the tools and knowledge to live more sustainably. These events also help build community relationships.*

**CE.2 Create educational community workshops on sustainability.**

*Short-term*

Educating the community will generate awareness of sustainability in general and the efforts that Grove City is making to create a better environment. Workshops are a great way to bring this common purpose amongst the community thus creating a sense of place and/or community. Community workshops on sustainability are used to introduce and educate members of a community on how Grove City plans to implement new ideas in the City. This is a way for community residents, organizations, and city officials to learn more about what the community is doing and how they can get more involved with this topic. Workshops would discuss a wide range of real-world environmental issues and how sustainable practices can be incorporated into their daily activities including rain barrels, rain gardens, recycling and composting, solar and wind power, water usage, renewable energy, and waste management.

*Who's Responsible?*

The Parks and Recreation Department, in conjunction with Development Department, would spearhead the planning and completion of educational community workshops.

RELATED TOPICS



PEER CITY EXAMPLES

x  
x

**CE.3 Sell sustainability related items in the Visit Grove City Store.**

*Short-term*

The Visit Grove City Store is located in the heart of downtown Grove City and aims to be not only a place for visitors to come and learn about Grove City, but also for residents who live and businesses that operate in the City. Selling or distributing sustainability related items such as trash cans, rain barrels, LED bulbs, reusable straws and silverware, waterbottles, and more in the Visit Grove City Store makes it easy and convenient for residents to receive items. Having sustainable items in the store also shows visitors that sustainability is a priority for Grove City.

*Who's Responsible?*

Visit Grove City, in conjunction with the Parks and Recreation Department, Development Department, and the Environmental Sustainability Committee would help see this action item to completion.

RELATED TOPICS



PEER CITY EXAMPLES

**CE.4 Meet with Grove City Homeowners Associations to provide resources for and encourage sustainable practices.**

*Short-term*

Homeowners Associations (HOAs) can be one of the main reasons residents are hesitant or prohibited from carrying out sustainable practices. Meeting with HOAs and educating them on how to incorporate sustainability into their communities and the benefits they can receive will potentially encourage them to consider adopting these practices and ultimately drafting new language into their covenants. Adopting green practices can help attract homeowners with an interest in sustainability who care about their communities. It can also help an HOA save resources and money. In addition, it can provide convenience to the board and residents, and help cut down on labor.

*Who's Responsible?*

The Parks and Recreation Department, in conjunction with Development Department and Environmental Sustainability Committee, would help facilitate conversations with HOAs in Grove City.



The Grove City Visitors Center features artisan goods sourced from local makers and artists, as well as a variety of outdoor gear for Grove City adventures. The Center could be utilized to sell and house sustainability related goods for residents and visitors.



The Summer Rain Barrel Program provides City of Cleveland residents with rain barrel systems free of charge. Workshops teach residents about stormwater management, and rain barrel care and assembly.

# 3

## **ENHANCE**

Built Environment.....	24
Natural Environment .....	28

*The physical environment is made up of both man-made and natural resources. Finding a balance between the built and natural environments is vital to the sustainability of an area. Action items for the built and natural environments aim to enhance the physical environment by promoting sustainable development practices, while also protecting Grove City's natural resources.*



# Built Environment



The built environment consists of man-made structures that are created or modified for human activity. It has been defined as “the human-made space in which people live, work and recreate on a day-to-day basis”(Roof, 2008). Elements of the built environment include architecture, landscape architecture, cities, and infrastructure. The City of Grove City aims to promote sustainable design and construction methods in order to reduce energy consumption by the built environment and increase public health and safety.

## Action Items

### RELATED TOPICS



### BE.1 Remove regulatory and permitting barriers for Low Impact Development (LID) practices.

*Short-term*

Low impact development (LID) refers to systems and practices that use or mimic natural processes in order to protect water quality and control stormwater flow. Regulatory and permitting barriers make up many of the challenges to successful implementation of LID. Implementing LID practices like clustering homes and reducing paved surfaces into new developments will help Grove City improve water quality and reduce flooding, while also preserving green space and natural vegetation.

*Who’s Responsible?*

This would be a joint effort between the Development Department, Building/Zoning Department and the Zoning Department.

### RELATED TOPICS



### BE.2 Remove regulatory and permitting barriers for Green Infrastructure (GI) and practices.

*Long-term*

GI is a cost-efficient alternative to costly traditional stormwater infrastructure, known as “gray” infrastructure, that is designed to move stormwater away from the built environment. In contrast to gray infrastructure, GI captures and treats stormwater at the source. Implementing green infrastructure, such as rain gardens, green roofs, and permeable pavement into new developments and replacing gray infrastructure with green will help to control stormwater, improve water quality and decrease flooding. GI can also incorporate natural vegetation that provide improved aesthetics.


*Who’s Responsible?*

The Building and Zoning Department and Development Department would update the Grove City Zoning Code to identify gaps, and incentivize green infrastructure in future developments. The Public Service Department would help to carry out implementation.

**PEER CITY EXAMPLE**

This example shows the process of how to determine gaps within sections of the zoning code in order to better incorporate Low Impact Development practices.

*Example*

Benchmark / Objective	Code Reference and Summary of Existing Standards	Impediment / Opportunity to Improve
<b>PARKING LOT RUNOFF</b>		
<p>(a) Is the use of bioretention islands and other stormwater practices allowed within landscaped areas and/or setbacks? (Center for Watershed Protection, 1998)</p> 	<p>21.05.050.E.2.e Landscaping shall be protected with raised planting surfaces, depressed walks, or curbs. Mowing strips shall be provided between turf and shrub areas.</p> <p>21.10.230.B.2.b.iv Parking lots should be divided into a series of connected smaller lots utilizing raised landscape strips and raised walkways.</p>	<p>The existing standards specify designs that are impediments to use the landscape areas for stormwater management.</p> <p>Need to allow the elevations of parking lot landscaping to be designed to accept stormwater flows.</p> <p>Need technical details and specifications to support stormwater management in landscape strip areas (e.g., curb cuts, bioretention plant lists, soil specifications, etc.).</p>

**RELATED TOPICS**



**BE.4 Incorporate EV compatible outlets in garages of new builds and retrofits.**

*Short-term*

Electrical outlets of 240 volts or more can efficiently charge electrical vehicles. Electric outlets of 240 volts can be installed in homes in order to offer faster charging and incentivize owning an electric vehicle.

*Who's Responsible?*

The Development Department could request that this be included in zoning text for new residential PUDs.

**RELATED TOPICS**



**PEER CITY EXAMPLE**

Grove City already has numerous LEED certified buildings that can act as precedents and incentives across the community.

**BE.3 Incentivize LEED principles for new buildings and retrofits.**

*Short-term*

LEED (Leadership in Energy and Environmental Design) is a widely accepted rating system incentivizing green practices by using alternative design and construction practices that are more sustainable. Buildings that are LEED certified save energy, water, resources, generate less waste and support human health. They also cost less to operate and boost employee productivity and retention. (USGBC)

*Who's Responsible?*

The Building and Zoning Division would offer reduced permit fees to developers implementing LEED practices into new buildings or retrofitting existing spaces/buildings. Grove City can also prioritize or fast track development proposals with LEED or green practices through the permitting and design review.



A Central Ohio Rain Gardens Initiative residence featuring Low Impact Development.



Bolton Crossing Elementary School in Grove City, Ohio was certified LEED in May of 2016. This and many other LEED certified buildings in Grove City can set the precedent for new construction in the area.



# Natural Environment



The natural environment is made up of natural resources that exist in nature without any interference or actions from humans, such as trees, streams, wetlands, green spaces and community gardens.. The City of Grove City aims to ensure an environmentally healthy community for both its citizens and its natural resources. Grove City works to protect and conserve its natural resources, through protecting habits, incorporating native plant species, and adapting open spaces, parks and community gardens. The City aims to engage citizens in sustainably interacting with nature and helping to maintain healthy ecosystems for the benefit of the planet and the community.

## Action Items

### RELATED TOPICS



### PEER CITY EXAMPLE

#### Dublin, OH

*The city of Dublin has a community garden that is first come, first serve for Dublin residents only. Plots are 15x15 and gardeners pay an annual fee of \$40 to cover support costs. Dublin donates any extra food to the Dublin Food Pantry.*

### NE.1 Create community gardens to engage residents and encourage locally grown foods.

*Medium-term*

Creating community gardens on Grove City owned property will provide residents with an opportunity to connect with nature and produce locally grown foods. Community gardens are beneficial for the Grove City community as well as the natural environment. It can help improve soil and air quality, and increase biodiversity of plants and animals. It also promotes sustainable agriculture practices and provides residents with access to healthy, nutritious, locally grown food. Any additional food harvested by gardens can be donated to a local food bank. Grove City can promote the process on social media, in the paper, and during community meetings and events to encourage residents to take advantage of the garden space and foster community buy-in and pride. Possible locations include Breck Park and Fryer Park.

#### Who's Responsible?

The Grove City Parks Board, with support from the Development Department, would determine the locations for the community gardens.

### RELATED TOPICS



### NE.2 Increase the number of native species planted in non-recreational areas.

*Short-term*

Grove City will evaluate potential open spaces (outside of recreational parks) and rights-of-way to plant native species. Additionally, the City will need to determine the correct blend of native species for that chosen areas. Native plants have adapted to the Grove City environment and therefore are low maintenance, require less water and help local animals and insects to thrive. For example, native plants will help increase the dwindling populations of native pollinators.

#### Who's Responsible?

Parks and Recreation Department would work with Urban forester in the Service Department to identify the locations to plant native species and engage volunteers to do the planting.

RELATED TOPICS



PEER CITY EXAMPLE

**Kalamazoo, MI**

Nature Center provides various education programs for community.

**NE.3 Implement community education program around planting more native species on private residences.**

*Short-term*

The community education plan is designed to develop educational materials targeted to encourage residents and businesses to preserve and plant more native species. Similarly to the benefits described in Action #2, native species that are planted on private property can help protect local animal and insect species, and use less water than non-native species. By educating the community about native species, Grove City can encourage its residents to plant the species on their own properties, providing benefits the community as a whole.

*Who's Responsible?*

The Parks and Recreation Department would work with the Urban Forester from the Service Department and Community Relations Department to provide and promote the education plans and events for community tied to native species. This could include a social media campaign, as well as a series of events with speakers who are knowledgeable about native species in the area.

RELATED TOPICS



PEER CITY EXAMPLE

**Upper Arlington, OH**

Works with Ohio State University Students to identify and remove invasive species. Upper Arlington also asks for volunteers from the community to help with the removal.

**NE.4 Form a community volunteer group to remove invasive species.**

*Short-term*

The City can reduce invasive species that cause harm to the ecosystem by forming a group of volunteers who will work to remove invasive species from Grove City's parks and public spaces. Invasive species can threaten the health of native species by competing for the same resources or directly preying on the native species. Removing invasive species prevents these species from further spreading and helps to foster a healthy ecosystem.

*Who's Responsible?*

Grove City's Parks and Recreation department would identify areas that have invasive species. Then organize a group of volunteers to help remove the invasives. This could be a regularly occurring group (if there are enough invasives to remove) or organize as needed.

RELATED TOPICS



PEER CITY EXAMPLE

**Dublin, OH**

The City has over 200 homes, schools and businesses that are certified Wildlife Habitats. Dublin itself is also a certified Community Wildlife Habitat.

**NE.5 Encourage homeowners in Grove City to manage their gardens and yards as wildlife gardens by receiving Backyard Wildlife Habitat certifications.**

*Medium-term*

The National Wildlife Federation's Backyard Wildlife Habitat certification program encourages homeowners to use their yards and gardens to create habitats for wildlife. Additionally, there is a program for Community Wildlife Habitat certifications that is for communities that have met the necessary threshold of individual Backyard Habitats and provides educational opportunities for its residents. Environmental changes and increased development can make it more difficult for wildlife to find an appropriate habitat. By creating and certifying a yard or garden as a Backyard Wildlife Habitat, residents can help to maintain healthy and diverse animal habitats and ecosystems.

*Who's Responsible?*

The Community Relations Department would advertise the Backyard Wildlife Habitat certification program and encourage residents to get their yards and gardens certified. The City should work with HOAs to allow these types of habitat in their properties. Additionally, the Parks and Recreation Department would work to obtain a Community Wildlife Habitat by obtaining credits for each property that is certified and by providing some educational or outreach opportunities.



The City of Powell's community garden.



Figure or Table 1: Description here, 2019.



# 4

## ADAPT

Energy .....	34
Transportation .....	38
Waste Reduction & Recycling .....	44

*Within their physical environment, community members need to be able to travel to work, turn lights on in their homes, recycle unwanted plastic, among many other daily tasks. Actions items in waste reduction, energy and transportation can help to adapt these daily tasks to ensure residents can live efficiently and effectively, while still protecting the community's resources.*



The topic of energy/renewable energy is focused on exploring actions which can be taken to increase adoption of renewable energy, reduce total energy consumption, and generally support more sustainable energy practices. The negative impacts of fossil fuel based energy generation have been well documented, and Grove City should seek to minimize the adverse impacts of fossil fuel energy usage throughout their city in an effort to pursue a more sustainable city.

## Action Items

### RELATED TOPICS



#### PEER CITY EXAMPLE

##### Lakewood, OH

*The City of Lakewood has committed to 100% renewable energy.*

### E.1 Commit to City Operations utilizing 100% emission-free sourced electricity.

#### Medium-term

The Smart Columbus Clean Energy Acceleration Program is a collaborative effort with MORPC which provides a plan for cities to reduce energy usage and source the electricity that is still being used from emission-free sources. This program maps out steps that cities can take to source 100% of electricity consumption from emission-free sources by 2050. The steps allow for cities to pay for the additional cost of renewable energy sources via the savings generated by reducing electricity consumption, effectively minimizing the cost to cities and enabling more sustainable city practices. Reducing the environmental impact of Grove City's energy consumption is a key step towards becoming a more comprehensive sustainable city. Issues of air quality and global warming are directly perpetuated by excess and non-renewable energy consumption. Committing to city operations utilizing 100% emission-free sourced electricity would be a significant contribution to greater environmental health.

#### Who's Responsible?

City Council would need to approve and facilitate the process of reducing energy usage and converting to renewable sources of electricity.

### RELATED TOPICS



#### PEER CITY EXAMPLE

##### Worthington, OH

*Worthington has recently aggregated their energy utilizing the opt-out model.*

### E.2 Explore Energy Aggregation.

#### Short-term

Aggregation is a process by which individual energy consumers can join together to buy energy as a group. This process is uniquely enabled in Ohio, providing the opportunity for cities to aggregate. Aggregation can follow either an opt-out or an opt-in framework, each of which bearing different legislative and legal requirements. Grove City should consider the potential of aggregation as a means of enhancing the buying power of energy consumers in the city, and leveraging this into bargaining for better prices on renewable energy sources.

#### Who's Responsible?

The City Council should explore aggregation options and determine if the public would benefit from such a process.

RELATED TOPICS



PEER CITY EXAMPLE

**Westerville, OH**

The City of Westerville promotes the EcoSmart Choice program, which seeks to help residents transition to renewably sourced energy.

### E.3 Educate the public about renewable energy sources.

#### Short-term

There are a variety of barriers to residents or businesses installing technology for solar or wind energy production. These include lack of public information, restrictive HOAs, and associated costs. Grove City should seek to inform the public of potential means of generating renewable energy and advocate for HOAs to allow for residential generation of renewable energy via wind or solar power. Ensuring that all members of the Grove City community have the opportunity to reduce their energy footprint is another essential aspect of making Grove City as a whole a more sustainable community. In conjunction with City Operations pursuing 100% emission-free sourced electricity, Grove City residents and businesses should be doing their best to achieve this same goal. Providing assistance to community members who seek more information on renewably generated electricity is a key function of the implementation of this plan.

#### Who's Responsible?

The Development Department should include information regarding energy efficiency and renewable energy when engaging the community. Furthermore, efforts should be made to reduce disinformation about renewable energy sources to encourage HOAs to become more accepting of residential renewable energy generation.



Smart Columbus Acceleration Fund.

RELATED TOPICS



PEER CITY EXAMPLE

**New Albany, OH**

Provides fee reductions or waivers for the aforementioned sustainable building practices.

### E.4 Promote Energy Efficient Building Practices.

#### Medium-term

Increase education to residents and property owners regarding programs such as Ohio PACE, MORPC Home Weatherization, and LEED Green Building Certification. These programs encourage property owners to build sustainably and enable existing buildings to receive energy efficiency upgrades which can significantly reduce excess energy usage. This education can be accompanied by green building checklists for municipal certifications as suggested in the business section of this plan. It is important that the development occurring in Grove City is done with sustainability in mind. Buildings which are designed to be energy efficient carry numerous benefits to both tenants and the surrounding environment, including less wasted energy, lower energy costs, and less harmful impacts to the natural environment from which the building materials and energy is sourced.

#### Who's Responsible?

The development department would incentivize green building practices through reduced permit fees or fast tracking applications which incorporate green building practices.

## Electric Aggregation Program



Worthington voters gave the City of Worthington the go-ahead to pool the community's electricity buying power by approving an issue to establish the City as an electric aggregator. The goals of the City's electric aggregation program are to lower household electric bills and increase renewable (green) energy usage. After receiving a number of proposals from energy suppliers, City Council has entered into an agreement with AEP Energy that will reduce the electric bills of participants and include the use of green energy certificates.

Eligible residents and small businesses have automatically been added to the program, unless they opted-out during the opt-out period. **Residents who wish to opt-out may still do so anytime by calling AEP Energy at 1-888-549-9008.**

Residents who were not eligible at the beginning of the program, but **who would like to opt-in** at a later date, can call AEP Energy at 1-888-549-9008 or check their eligibility and sign up online here:

<https://enroll.aepenergy.com/acquisition/aggregation>

Worthington Energy Aggregation Program.



# Transportation



Transportation is an important part of daily life for most Grove City residents. Multi-modal transportation such as walking, biking, driving a car, carpooling, and taking public transportation affects daily lives as well as how a transportation system operates and utilizes resources. How people choose to mobilize themselves affects not only Grove City, but the Central Ohio region as well. A deeper look at the existing transportation infrastructure will inform how future transportation planning efforts can become more sustainable and connect to regional goals. Sustainable transportation is a crucial first step for a sustainable and thriving Grove City.

## Action Items

### RELATED TOPICS



### PEER CITY EXAMPLES

#### Austin, TX

*Austin City Council required major city roadway projects to budget 20% towards sidewalk and bicycle facilities.*

#### Cleveland Heights, OH

*Earned the highest score for the complete street policy from Smart Growth America in 2018. Emphasized equity and attention to detail in their complete streets policy implementation.*

## T.1 Create Complete Street Design Guidelines.

### Long-term

Complete Street Policy promotes multi-modal transportation, where all modes (pedestrians, bicyclists, public transit, cars) are configured into street design so each mode has the appropriate safety and design considerations. Many cities have adopted the policy, including Grove City as referred to in their Grove City 2050 plan, in order to promote safer environments for those utilizing various transportation modes. The Mid-Ohio Regional Planning Commission (MORPC) created a Complete Streets Toolkit for local governments of Ohio to implement this policy in their street design. The Grove City Environmental Sustainability Committee should recommend that City Council adopt a binding Complete Streets ordinance with enforceable steps for implementation. Next steps include setting the stage for implementation; a manual detailing the process for prioritizing, designing, and delivering Complete Street projects on different types of roadways. Transit Oriented Development can help to achieve these goals by placing housing and transportation choices near employment, shopping centers, and schools.

Complete Street Policy promotes safety, accessibility, and all modes of transportation within a thoroughfare. Additionally, social equity can be achieved by implementing Complete Streets policy. Transportation infrastructure that considers multi-modal connectivity accommodates for all people of varying socio-economic status that live and are traveling through Grove City. For example, people who do not own cars will have greater opportunity to access public transportation in order to get to work, the grocery store, healthcare facilities, and other daily needs.

### Who's Responsible?

In connection with the Grove City 2050 Plan Action Item T1.1, the complete street policy should be formalized so that it can be adopted by City Council. The Development Department should plan the next steps and include relevant parties in the design and implementation phases.

## RELATED TOPICS



### PEER CITY EXAMPLES

#### Indianapolis, IN

*The Cultural Trail is one of the best examples of safe, sustainable, and culturally unique trail systems in the country.*

#### Minneapolis, MN

*Midtown Greenway is a rail-to-trail (a former rail line transformed into a trail) that is a barrier-free zone and gets a person across town quicker than a car! The greenway connects to shops, restaurants, businesses, lakes, nature preserves, and surrounding neighborhood areas.*

## T.2 Build more active transportation infrastructure.

### Long-term

Active transportation accommodates and plans for pedestrians and bicyclists. Grove City can achieve more sustainable forms of transportation by building more active transportation infrastructure. Transit oriented development is a zoning tool that can be used to prioritize active transportation infrastructure, so that Grove City can increase its walkability. In conjunction, incorporating mixed-use development can begin to change land use patterns and provide ideal environments for walkability. Additionally, adding more trail miles within Grove City can further walkability goals and provide cyclist connections to the Central Ohio Greenways regional trail network. Trail infrastructure is beginning to accommodate both recreation and transportation needs, so increasing connectivity to downtown Columbus and the region is important. The next step in expanding trails efforts is to determine criteria that prioritizes active transportation segments within Grove City.

Promoting sustainable transportation for Grove City and the Central Ohio region is necessary as Central Ohio will continue to potentially grow by 1 million people by 2050 (Insight 2050, 2019). Conventional methods of transportation alone will not be enough to accommodate for the growth that Central Ohio will see in the years to come. As new trail miles are built, the impacts of additional trail miles can be analyzed to determine the benefits derived from this sustainable infrastructure. Prioritizing additional active transportation infrastructure will increase various transportation options, connect residents to community assets and to downtown Columbus, improve the health of the Grove City community, preserve greenspace, and further economic development opportunities.

### Who's Responsible?

In line with the vision laid out in the Parks, Recreation and Open Space Comprehensive Plan (Chapter 4), the Parks and Recreation and Development Departments would create implementation plans, conduct routine maintenance and upkeep of the trails through various weather conditions, prioritize trail segments based on the needs of the community, analyze the impacts of trails and work with the Central Ohio Greenways Board to connect local Grove City trails with the regional network.

## RELATED TOPICS



### PEER CITY EXAMPLE

#### Smart Columbus

*The Smart Columbus initiative tracks the available EV charging station network in Columbus and there is room for expansion into Grove City. Fostering sustainability is central to Smart Columbus' vision.*

## T.3 Enhance connectivity and access to EV charging stations.

### Short-term

America has begun to shift to a new era in automobile ownership. The International Energy Agency expects 125 million Electric Vehicles (EVs) to be on the road by 2030, and the percentage of market share held by EVs is increasing annually in the United States. Residents and employees located in Grove City will want to have ease of access to charging stations near homes and businesses that is equally as comprehensive as traditional gas stations are today. Locations in Grove City should be identified that hold high EV charging usage potential such as nearby local businesses and residential communities. An expanded network of EV charging stations will usher in a cleaner, more sustainable future for Grove City as more people make the switch over to EVs. With the market share of EVs in America and in Ohio increasing every year, residents and businesses alike will be prioritizing the ease of access to EV stations. Local businesses will benefit from an increased level of traffic from EV owners that utilize these convenient charging spots. Identifying the potential locations with the highest value of convenience will be an important step in establishing a reliable network. Incentives can be made to businesses and residents for developing their own charging stations but a coordinated effort to build the most efficient network possible will have the greatest level of impact.

### Who's Responsible?

The Development Department would be responsible for this action.



**BARRIER EXAMPLE**

**I-71 Highway in Grove City**  
*I-71 was identified as a barrier to active transportation as it splits Grove City down the middle. The large highway makes it uncomfortable for pedestrians to traverse and therefore inhibits multi-modal travel between the halves of Grove City it created. Future barriers such as a lack of EV charging infrastructure should be identified and the necessary steps to proactively overcome them should be made.*

**T.4 Identify barriers to multi-modal and active transportation to overcome transportation barriers.**

*Long-term*

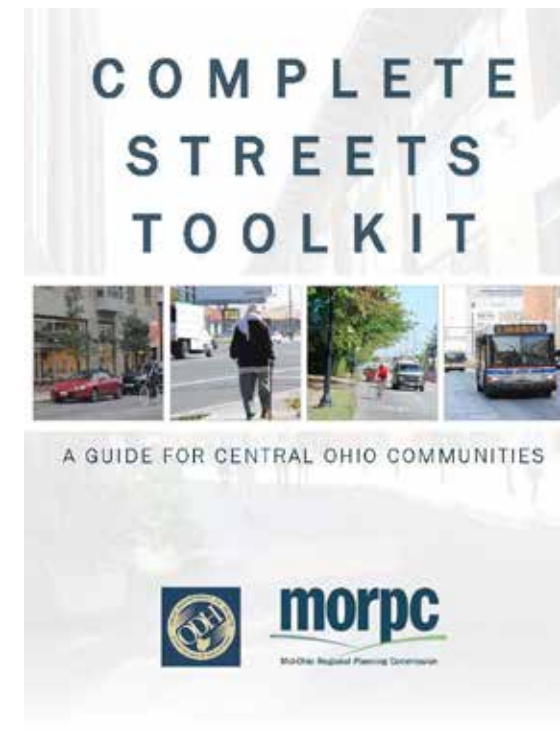
Barriers to efficient and sustainable transportation must be overcome in order to unlock Grove City’s full potential. Some of the identified barriers to transportation in Grove City include the major roads and highways that cut through the city. Though bridges exist to cross these corridors, multi-modal travelers still perceive them as a barrier when they feel uncomfortable crossing them. A barrier that inhibits a Grove City resident from perceiving the trail system as anything but a recreational system should be overcome to open up the possibilities the trail system may hold for transportation. Future barriers such as a lack of EV charging infrastructure should be identified and the necessary steps to proactively overcome them should be made. Enhancing the connections between Grove City’s arterials that are otherwise unusable will give people the chance to choose from a myriad of modal options. Identifying where accidents and congestion are causing inefficiencies in travel or unsafe road conditions would make the Grove City road network easier to navigate for all users. Overcoming barriers to all forms of transportation is an important step in the process of running a transportation system in the most efficient and sustainable way possible.

*Who’s Responsible?*

The Development Department would be responsible for this action.



I-71 in Grove City has been identified as an active transportation barrier.



MORPC’s complete streets toolkit for Central Ohio Communities. The document contains model policies that can serve as a template for creating a Complete Streets policy in a variety of communities.



Tesla charging station in Grove City.



# Waste Reduction & Recycling



Waste reduction refers to any actions or policies that limit the amount of waste going into landfills or is otherwise not being recycled/repurposed. These actions can include reducing the amount of food that is thrown out or the amount of trash generated in general, as well as alternatives to throwing it out, such as composting. This is an important part of any city's sustainability as landfill waste produces methane, a greenhouse gas more potent than CO<sub>2</sub> and has a significant impact on climate change. In addition, there is also a finite amount of space in which to dispose of waste

and it must be located far enough from residences in order to avoid any negative health effects from its proximity.

## Action Items

### RELATED TOPICS



### PEER CITY EXAMPLE

#### Seattle, WA

*Seattle has a Green Business Program that offers free recycling and conservation assistance to all businesses in the city, teaching them how to conserve resources and reduce costs to both their business and the environment.*

### RELATED TOPICS



### PEER CITY EXAMPLE

#### Michigan's Department of Environment, Great Lakes, and Energy

*This Department recently launched a statewide recycling education campaign by introducing the Recycling Raccoon Squad, a team of six raccoons with distinct personalities that teach people about proper recycling.*

## WR.1 Partner with SWACO to create commercial recycling initiatives.

### Medium-term

Encourage businesses in Grove City to recycle more through initiatives such as providing larger recycling receptacles, an educational campaign explaining what can be recycled, how, and what the benefits are, or recycling awards that can be displayed in their storefronts. Businesses create huge amounts of waste and many are likely unsure of what they can recycle or do not have large enough receptacles to hold everything. Getting more businesses to recycle can significantly reduce the amount of waste they are disposing of that ends up in landfills.

### Who's Responsible?

The Public Service and Development Departments would work with SWACO to develop these initiatives.

## WR.2 Develop an educational campaign encouraging proper recycling.

### Short-term

Require education about how to properly recycle in schools or more generally for all residents. Proper recycling could be taught in science classes or assemblies at schools, while residents could also be offered classes at the local recreation center or YMCA or given handouts explaining exactly how to recycle and compost, and how it is environmentally beneficial. Advertise the numbers on how much waste is reduced in order to further encourage them. If an item is not prepared properly, i.e. rinsed and dried, then it can contaminate all the other recyclables in the bin and they will have to be thrown out. Many people also do not know what specific recyclables are accepted in their area. If more people knew how to properly recycle, it could greatly increase the number of items being successfully recycled and lower the amount of waste entering landfills.

### Who's Responsible?

The Parks and Recreation Department, with support from the Community Relations Department, would also develop educational tools to share online or mail to residences, as well as work with local recreation centers to offer more classes on how to properly recycle.

RELATED TOPICS



PEER CITY EXAMPLES

Youngstown, OH

A Youngstown-based organization, Grow Youngstown, received a grant from the Ohio EPA in 2013 to educate farmers, businesses, and community gardeners about composting throughout the region.

WR.3 Develop an educational campaign encouraging proper composting.

Medium-term

Educate residents about how to compost at home, and all the benefits it provides. This can be targeted at farmers and businesses as well, since they produce a larger amount of compostable waste than homes. Composting could also be incorporated into the science curriculum at schools, and children could receive information to share with parents. A great deal of waste that goes into landfills, such as fruit and vegetable peels, meat bones, and paper towels, could instead be composted and used for farming and gardening. This would not only benefit growers, but would also prevent a large amount of waste from entering landfills, thus lessening both air and ground pollution.

Who's Responsible?

The Parks and Recreation Department, with support from the Community Relations Department, would develop educational materials to send to residents or work with a local organization to develop an educational campaign.

RELATED TOPICS



PEER CITY EXAMPLES

Santa Clara County, CA

The County offers a composting education program, which offers a Master Composter Training program and free composting classes. Once someone completes the Master Composter Training Program, they can then teach residents how to build compost piles and worm bins in their backyard and how to properly use the compost they create.

WR.4 Promote convenient composting collection.

Medium-term

Develop a convenient residential composting program and designate various locations around the city as drop-off locations for compost, in order to make composting as easy as possible for residents. Composting can greatly reduce the amount of waste entering landfills, which is greatly beneficial to the environment.

Who's Responsible?

Grove City Parks and Recreation Supervisor would create a plan and work with a contractor to offer composting services to residents. Educational materials should be developed to share with residents.



Grow Youngstown.



Michigans Department of Environment Recycling Raccoon Squad.



Bexley, OH recycling program.



# 5



## Refine

City Operations . . . . .	50
Business Practices . . . . .	54



# City Operations



City Operations include all the things that keep a city running. This includes performing basic city services such as sanitation, water, quality streets, police, and transportation. Grove City plays an important role in contributing to the local economy, enabling a healthy and active workforce, and ensuring environmental well-being for the Grove City area. Implementation of many innovative ideas throughout the City can enable the City to operate more sustainably and set an example for residents and businesses.

## Action Items

### RELATED TOPICS



#### PEER CITY EXAMPLE Columbus, OH

*Columbus implemented requirements for product procurement to favor items that have reduced human health and environmental impacts compared with market competitors into their city code in January 2018.*

### CO.1 Create a Sustainable Procurement/Purchasing Policy.

*Medium-term*

A sustainable, or “green” procurement and purchasing policy pertains to the products and services that the city may buy or provide for the community. The implementation of these policies will begin to demonstrate the need for sustainable products and the impacts they have on the public, their health, and the environment. This policy would lead to the development of preferred or default options for specific goods and services that are more sustainable than other alternatives or previously utilized options. Sustainable purchasing can also include renting rather than outright buying, as well as choosing less toxic options. Transitioning from conventional to sustainable purchasing options encourage the use of more sustainable products. These purchases can also lead to reduced bid costs and lower utility bills.

#### *Who’s Responsible?*

The Development Department would create a policy or change city code to prioritize and require sustainable procurement, and making a list of the default and preferred products that are regularly purchased.

### RELATED TOPICS



#### PEER CITY EXAMPLE Dublin, Ohio

*Dublin will add 10 EVs to their fleet, with their first one arriving in the summer of 2018.*

### CO.2 Transition City Fleet to Electric Vehicles.

*Short-term*

This would entail transitioning the city’s vehicle fleet, especially police cars and other regular city automobiles, to electric vehicles. All older vehicles that are being replaced could be replaced by electric vehicles. Newer vehicles that aren’t set to be replaced soon may be replaced sooner by procuring grant money for this expense. Reducing emissions is key for reducing the City’s carbon footprint and increasing health outcomes as a result of better air quality. Carbon emissions have a direct correlation with asthma and other breathing problems. Reducing the cities emissions will be one step to a healthier community.

#### *Who’s Responsible?*

Grove City Administration would create the policy, propose new electric vehicles into budget, and purchase vehicles.

## RELATED TOPICS



### PEER CITY EXAMPLES

#### Columbus, OH

*Columbus water protection initiatives provide various programs to ensure the city is protecting water sources and ensuring drinking water quality.*

## **CO.3** Implement city potable water consumption policies.

### *Medium-term*

A potable water consumption policy encourages strategies to reduce water use within the community. Implementing policies that will reduce the amount of water being consumed in the City will be beneficial for the city's sustainability efforts. With these policies, the City will be able to promote the values and benefits utilizing Low Impact Development (LID) practices to improve efficiencies in water use, implement structures to manage stormwater discharge, promote the use of recycled water for irrigation, and regulated the water allowances. These practices can be measured with annual potable water use and annual recycled water use. Water conservation is important to cities because it helps to protect drinking water resources, and saves money and energy. In order to protect depleting watersheds, it is important to make sure the City is taking the initiative to preserve the existing water and reduce the amount of water being consumed. Some of the best practices may include investment in cisterns, rain gardens, bio retention swales, low-water use appliances, fixtures, and products, etc. By investing in these types of best practices the City will decrease the municipal operational cost, time, and energy.

### *Who's Responsible?*

Grove City would implement policies that promote low impact design best management practices within the city. Some of the best practices may include investment in cisterns, rain gardens, bio retention swales, low-water use appliances, fixtures, and products, etc.



# Business Practices



Green business practices can potentially give an increase to the tax base and give Grove City an esteemed reputation for having some of the greenest companies in the United States. All of this can be possible with the creation of a sustainable checklist for existing businesses.

This checklist will hold each owner accountable for a sustainable future in Grove City. The Grove Green program will be a checklist that rates on 3 levels that include Bronze, Silver and Green. It will have multiple categories that rate the general practices of individual businesses. Along with the Grove Green Program there will be green development

checklist for new construction projects across the City. The checklist will consist of 3 sections that include context, site development and lastly green building. If developers abided by the regulations set by the green checklist development fees could be waived by city officials.

## Action Items

RELATED TOPICS



### BP.1 Create a Grove Green Checklist.

*Short-term*

The Grove Green program seeks to encourage current businesses in Grove City to work towards an environmentally sustainable workspace. Existing businesses could become part of the solution and get recognition for their green actions. The Grove Green program will consist of 3 categorized levels that include Bronze, Silver and the highest level of recognition of Green. In addition, being a green business attracts environmentally-minded customers to your location and possibly new residents to the area. Businesses will be listed on the City website and each business will receive a window decal that notes they are a Grove Green business. To be recognized as a Grove Green business, you must implement a variety of measures to show a commitment to sustainability. There will be six sections included in the checklist they are; general practices, water issues, energy efficiency and conservation, water conservation, pollution prevention, and green purchasing.

*Who's Responsible?*

The Building Department would form a committee to oversee the program and conduct inspections on the workspaces that want to participate in the Grove Green program. With the Green Development Checklist, Zoning and Ordinance would be involved with the process.

## RELATED TOPICS



### PEER CITY EXAMPLE

#### Dublin, CA

*Uses the Shamrock Program for existing businesses.*

#### New Jersey

*Has an existing checklist for green development in the state.*

## BP.2 Create a Grove City New Development Checklist.

### Long-term

In conjunction with the checklist for existing businesses in Grove City, there can also be a Green Development Checklist. This checklist will be a guide for new businesses that will relocate to the area to encourage them to follow the standards set in place for green development. A new development checklist will be prepared to assist Grove City officials in reviewing planning submittals for sustainable green design aspects of new development projects. If future companies comply with these standards, development fees could be waived. However, it is beneficial for reviewers of a proposed development to have a comprehensive understanding of the development's potential to incorporate green design, increasing the site's sustainability and its impact on the community. The checklist is organized by scale from a city context, to individual site, lastly to the structures on the site. This new green development checklist will assist the community when it comes to new development plans being submitted to Grove City.

The promotion of a sustainable work environment includes numerous factors such as environmental stewardship, pollution control, as well as resource efficiency. For existing businesses, having environmental responsibility helps with the reduction in energy consumption, water conservation, assured regulatory compliance with Grove City, enhanced public image by having a green business in the community and new market opportunities for their business.

This checklist will assist and encourage new green sustainable techniques when it comes to new projects. The development checklist will include context, site development, and green building.

### Who's Responsible?

In conjunction with the checklist, the Building Department would form a committee to oversee the program and conduct inspections on the workspaces that want to participate.

## RELATED TOPICS



### PEER CITY EXAMPLE

#### Dublin, OH

*In it's Sustainability Framework, Dublin has an action item to create a Green Business Roundtable and host an annual event for the roundtable.*

## BP.3 Create a Green Business Roundtable.

### Short-term

A Green Business Roundtable brings together business owners in Grove City to have facilitated discussions on sustainable business practices. Roundtable events could be hosted twice a year and discussion topics would be different at each event. The Green Business Roundtable could discuss the Green Business Checklist (Action item BP.1), including changes or additions to the checklist or ways to advertise and encourage business owners to use the checklist.

### Who's Responsible?

The Environmental Sustainability Committee would work with the Community Relations Department to do targeted outreach to local business owners, in order to form the Green Business Roundtable and host the events.

# 6

## Implement

Implementation Table .....	61
References .....	70



# Implementation

Implementing the action items presented in this plan is key to ensuring a more sustainable Grove City. Too often plans identify problems and recommend solutions, but are found sitting on the shelf instead of integrated into the policies and programs of the community. Action items in this plan are intended to be implemented either on their own or as a part of Grove City's other initiatives and capital improvements. In order to make the implementation process as seamless as possible, the Implementation Matrix in this chapter was created to outline timelines, responsible parties and metrics to measure success for each action item.

Implementation does not stop after an action item is first put into effect. Many action items are implemented in steps or over a long period of time. For this reason, it is important to track the progress of implementation for each action. Creating an Implementation Committee, who can work on ensuring the implementation of the actions, is one way that Grove City can stay accountable. An Implementation Committee could follow up with responsible parties, track progress and update the timelines to account for unforeseen changes down the road. This committee could also provide an updated report once a year to show which action items have been implemented and where work still needs to be done.

## How residents can get involved today:

- Educate yourself on ways to live a more sustainable lifestyle.
- Get involved in community events.
- Be conscious about your energy consumption and try to reduce household energy use.
- Participate in recycling and composting programs.
- Conserve household water use by using less and installing water friendly appliances.
- Next time you need to replace old appliances, electronics, doors, or windows choose a more energy efficient model instead.
- Resell and donate items.
- Eat locally.
- Use alternative modes of transportation when possible.
- Speak with your HOA on eliminating restrictions on sustainable activities.
- Practice friendly landscaping by reducing fertilizer use and planting native species.
- Use "green" cleaning products that do not contain chemicals that are hazardous to people and the environment.
- Share your knowledge with others through social media and personal interaction.

# Implementation Matrix

Related Categories	ID	Action	Responsible Parties	Funding Threshold	Incremental Timeline	Metrics
	CE.1	Improve social media and publication presence involving sustainability topics, events, and progress	Community Relations Department	No additional funding beyond staff time	<p><b>Short Term-</b> Decide what social media platforms Grove City would like to publish on.</p> <p><b>Medium Term-</b> Research and prepare all content that should be included on media pages.</p> <p><b>Long Term-</b> Maintain new pages and make sure that the content is up to date weekly or bi-weekly.</p>	1. Data tracking on how many people view and comment on the pages.
	CE.2	Create educational community workshops on sustainability.	Parks and Recreation and Development Departments	Limited additional funding necessary	<p><b>Short term-</b> Create content, materials, dates, and times for the workshop.</p> <p><b>Medium Term-</b> Develop an implementation plan that includes specific monthly or quarterly dates and times for the workshop.</p> <p><b>Long Term-</b> Provide certifications to businesses and organizations for attending workshops.</p>	1.Meeting retention rates
	CE.3	Sell sustainability related items in the Visit Grove City Store.	Visit Grove City, Parks and Recreation Department, Development Department, Environmental Sustainability Committee	No additional funding beyond staff time	<p><b>Short term-</b> Have a meeting with responsible parties to see if there are permits needed to achieve this action.</p> <p><b>Long Term-</b> Continually update and survey residents to see which items they would like to have in the store .</p>	1. Sales or net profit of sustainability related products in store 2. Foot traffic increase in store
	CE.4	Meet with Grove City Homeowners Associations to provide resources for and encourage sustainable practices.	Parks and Recreation Department, Development Department, Environmental Sustainability Committee	No additional funding beyond staff time	<p><b>Short term-</b> Identify HOAs in Grove City.</p> <p><b>Medium Term-</b> Create flyers and presentations for meetings with HOAs.</p> <p><b>Long Term-</b> Maintain relationships with HOAs to monitor changes in covenants and other adoption of sustainable practices.</p>	1. Number of HOAs in attendance at meetings 2. Number of HOAs that adopt sustainable practices

Related Categories	ID	Action	Responsible Parties	Funding Threshold	Incremental Timeline	Metrics
	BE.1	Remove regulatory and permitting barriers for Low Impact Development (LID) practices.	Development, Building/Zoning and Zoning Departments	No additional funding beyond staff time	<p><b>Short term-</b> Identify regulatory barriers for LID practices in Grove City's municipal code using the "Gap Analysis User Guide" created by AHBL</p> <p><b>Medium term-</b> Prepare an ordinance package with suggested amendments to the identified codes</p> <p><b>Long term-</b> Require new development to adhere to new codes. Assist existing development to transition to new codes</p>	
	BE.2	Remove regulatory and permitting barriers for Green Infrastructure (GI) and practices.	Building and Zoning, Development and Service Departments	No additional funding beyond staff time	<p><b>Short term-</b> Identify regulatory barriers for green infrastructure in Grove City's municipal code using the "Gap Analysis User Guide" created by AHBL</p> <p><b>Medium term-</b> Prepare an ordinance package with suggested amendments to the identified codes</p> <p><b>Long term-</b> Require new development to adhere to new codes. Assist existing development to transition to new codes</p>	<ol style="list-style-type: none"> <li>1. Number of barriers removed</li> <li>2. Number of GI practices implemented</li> </ol>
	BE.3	Incentivize LEED principles for new buildings and retrofits.	Building and Zoning Division	Limited additional funding necessary	<p><b>Short term-</b> Create and establish structural incentives (expedited review/ permitting process or density bonuses) to reward developers who adopt green building techniques</p> <p><b>Medium term-</b> Research and establish revolving loan programs for homeowners and developers interested in green building</p> <p><b>Long term-</b> Research and create financial incentives (tax abatements/ credits) to encourage developers and homeowners to follow green building practices</p>	<ol style="list-style-type: none"> <li>1. Number of LEED buildings in Grove City</li> <li>2. Number of permits with LEED principles incorporated into the plans</li> <li>3. Number of retrofits incorporating LEED principles</li> <li>4. Number of new buildings incorporating LEED principles</li> </ol>

Related Categories	ID	Action	Responsible Parties	Funding Threshold	Incremental Timeline	Metrics
	BE.4	Incorporate EV compatible outlets in garages of new builds and retrofits.	Development Department	No additional funding beyond staff time	<p><b>Short term-</b> Do research on EV chargers for residential homes. Discuss with/educate developers.</p> <p><b>Medium term-</b> Remove barriers that may exist within the code and find organizations that may help offset the cost of incorporating EV outlets/chargers into residential buildings.</p> <p><b>Long term-</b> Developers install EV compatible outlets into new developments and retrofits</p>	<ol style="list-style-type: none"> <li>1. Number of barriers removed</li> <li>2. Number of EV compatible outlets installed</li> <li>3. Number of kWh used to charge the electric vehicles</li> </ol>
	NE.1	Create community gardens to engage residents and encourage locally grown foods	Parks Board and Development Department	Columbus Foundation Urban Gardening Grant	<p><b>Short term-</b> Identify appropriate space for the garden and secure funds. Research partnerships with local food banks or restaurants to reduce food waste.</p> <p><b>Medium term-</b> Build community garden and do community outreach (social media, website, create educational fliers) to find community members to participate</p> <p><b>Long term-</b> Maintenance and continue education outreach around the garden.</p>	<ol style="list-style-type: none"> <li>1. Number of participants in the garden</li> <li>2. Square footage of community gardens in Grove City</li> <li>3. Pounds of food produced</li> </ol>
	NE.2	Increase the number of native species planted in non-recreational areas.	Parks and Recreation Department and Urban Forester in Service Department	Limited additional funding needed	<p><b>Short term-</b> Identify non-recreational areas that could benefit from native species.</p> <p><b>Medium term-</b> Organize volunteer group and days for volunteers to plant the native species.</p> <p><b>Long term-</b> Maintain the native species in the new areas.</p>	<ol style="list-style-type: none"> <li>1. Number of native species planted</li> <li>2. Number of non-recreational areas with native species</li> </ol>



Related Categories	ID	Action	Responsible Parties	Funding Threshold	Incremental Timeline	Metrics
	NE.4	Form a community volunteer group to remove invasive species.	Parks and Recreation Department	No additional funding beyond staff time	<p><b>Short term-</b> Identify areas where invasive species need to be removed and organize volunteer groups.</p> <p><b>Long term-</b> Continue to monitor areas for invasive species and utilize the volunteer program when needed.</p>	<ol style="list-style-type: none"> <li>Number of volunteers per year that help to remove invasive species</li> <li>Number of invasive species removed per year</li> </ol>
	NE.5	Encourage homeowners in Grove City to manage their gardens and yards as wildlife gardens by receiving Backyard Wildlife Habitat certifications	Community Relations and Parks and Recreation Departments	No additional funding beyond staff time necessary	<p><b>Short term-</b> Organize events or social media campaign to advertise and promote the Backyard Wildlife Habitat Program.</p> <p><b>Medium term-</b> Certify Grove City as a Community Wildlife Habitat.</p> <p><b>Long term-</b> Maintain community certification.</p>	<ol style="list-style-type: none"> <li>Number of Backyard Wildlife Habitat certified homes in Grove City</li> </ol>
	E.1	Commit to City Operations utilizing 100% emission-free sourced electricity.	All City Departments	Additional funding needed	<p><b>Short term-</b> Formalize a commitment to reducing energy usage and adopt a plan to pursue 100% emission-free sourced electricity based on the Smart Columbus model.</p> <p><b>Long term-</b> Continue to follow the adopted plan until the goal is met.</p>	<ol style="list-style-type: none"> <li>Percent Energy usage sourced from emission-free sources</li> <li>Percent Energy usage reduced</li> </ol>
	E.2	Explore Energy Aggregation	City Council	No additional funding beyond staff time	<p><b>Short term-</b> Gauge public opinion regarding energy aggregation and explore different pathways towards aggregation.</p> <p><b>Medium term-</b> Determine if aggregation is politically feasible in Grove City and devise a strategy for utilizing aggregation to promote sustainable energy practices.</p>	<ol style="list-style-type: none"> <li>Number of Grove City residents surveyed regarding aggregation</li> </ol>
	E.3	Educate the public in regards to renewable energy sources.	Development Department	No additional funding beyond staff time	<p><b>Short term- Research</b> ways that the public, and individuals, can incorporate renewable energy sources into their homes and offices. Post on social media and the city website about renewable energy. Create a publication on renewable energy sources for the public.</p> <p><b>Medium term-</b> Host a workshop for the public on renewable energy sources.</p>	<ol style="list-style-type: none"> <li>Number of social media posts on renewable energy sources</li> <li>Number of workshops hosted</li> <li>Number of workshop attendees</li> </ol>

Related Categories	ID	Action	Responsible Parties	Funding Threshold	Incremental Timeline	Metrics
	E.4	Promote Energy Efficient Building Practices.	Development Department	Limited additional funding needed	<p><b>Short term-</b> Educate the public on energy efficient building practices. Create incentives for developers to build more efficiently, such as waiving permit fees or prioritizing applications. Discuss installation of solar panels and rain barrels with HOAs.</p> <p><b>Medium term-</b> Host workshops to promote these practices and educate interested owners and builders, create a list of best practices that the city endorses.</p> <p><b>Long term-</b> Building owners/developers incorporate energy efficient building practices into new buildings and retrofits</p>	<ol style="list-style-type: none"> <li>Number of LEED certified buildings in Grove City</li> <li>Number of attendees at workshops</li> <li>Number of sq ft of energy efficient homes</li> <li>Number of buildings retrofitted with more energy efficient materials, appliances, etc</li> </ol>
	WR.1	Partner with SWACO to create commercial recycling initiatives	Public Service and Development Departments	Limited additional funding needed	<p><b>Short term-</b> Reach out to SWACO to discuss partnerships, create policy to provide larger recycling bins to businesses.</p> <p><b>Medium Term-</b> Develop guidelines for commercial recycling and start program to track waste in businesses and reward businesses for lowering waste</p> <p><b>Longer term-</b> Continue to encourage and monitor commercial recycling</p>	<ol style="list-style-type: none"> <li>Percent change in commercial recycling rate</li> <li>Number of lbs. of waste recycled</li> </ol>
	WR.2	Develop an education campaign encouraging proper recycling	Parks and Recreation and Community Relations Department	Limited additional funding needed	<p><b>Short term-</b> Create a booklet to send to residents.</p> <p><b>Medium term-</b> Offer recycling classes for residents and businesses.</p> <p><b>Long-term-</b> Incorporate recycling into science classes in Southwestern City Schools, create a recycling club</p>	<ol style="list-style-type: none"> <li>Percent change in recycling rate</li> <li>Lbs of waste recycled</li> </ol>

Related Categories	ID	Action	Responsible Parties	Funding Threshold	Incremental Timeline	Metrics
	WR.3	Develop an education campaign encouraging proper composting	Parks and Recreation and Community Relations Departments	Limited additional funding needed	<p><b>Short term-</b> Create a booklet giving residents information on how to compost at home.</p> <p><b>Medium term-</b> Offer classes on composting for residents and businesses.</p> <p><b>Long term-</b> Offer incentives to restaurants and grocery stores to compost their food waste.</p>	1. lbs of waste composted and diverted from landfills
	WR.4	Promote convenient composting collection	Parks and Recreation Department	Additional funding necessary	<p><b>Short term-</b> Designate a composting drop-off location that is conveniently located in the middle of the city.</p> <p><b>Medium term-</b> Add additional drop-off locations so that all residents and businesses are within close proximity to one.</p> <p><b>Long term-</b> Work with a local composting facility to offer curbside pick-up.</p>	1. Number of people using composting services
	T.1	Create Complete Street Design Guidelines.	Development Department	Limited additional funding necessary	<p><b>Short term-</b> Planning process: research and educate the public on complete streets.</p> <p><b>Medium term-</b> Grove City Council to adopt and formalize Complete Streets Policy. Committee needs to create a Complete Street Design Guidelines document.</p> <p><b>Long term-</b> Implement the guidelines into newly developed streets, and retrofit areas in need. The planning and engineering department should begin the design phase on the Complete Street infrastructure. Lastly, enter the construction phase.</p>	<ol style="list-style-type: none"> <li>Number of modes of transportation accounted for</li> <li>Miles of complete streets</li> <li>Miles of streets converted to complete streets</li> <li>Conduct counts on each mode of transportation. (# of bus riders in a given month, bike/ped counts bi-annually, etc.)</li> </ol>

Related Categories	ID	Action	Responsible Parties	Funding Threshold	Incremental Timeline	Metrics
	T.2	Build more active transportation infrastructure.	Parks and Recreation Department	Additional funding needed	<p><b>Short term-</b> Existing trail maintenance, begin planning phase for implementation efforts, and develop criteria to prioritize active transportation segment locations.</p> <p><b>Medium term-</b> adding trail amenities to existing trail system, planning efforts,</p> <p><b>Long term-</b> build more trails, bike lanes, and promote walkable environments and control density, build safer pedestrian crossings.</p>	<ol style="list-style-type: none"> <li>Conduct bi-annual bike/ped counts</li> <li>Number of crosswalk safety improvements per year</li> <li>Number of trail miles built per year</li> <li>Average number of trail users per year/per trail (categorized by each trail)</li> <li>Number of trail miles traveled per year</li> </ol>
	T.3	Enhance connectivity and access to EV charging stations.	Development Department	Additional funding needed	<p><b>Short Term -</b> Track the number of new EV stations placed in Grove City</p> <p><b>Long Term -</b> Track usage statistics of the EV stations</p> <p><b>Long Term -</b> Track the percentage of EV ownership among Grove City residents, possibly businesses if they would offer that information from their employees</p>	<ol style="list-style-type: none"> <li>Number of new EV stations</li> <li>Frequency of usage for each station, heat map of most popular stations, kw hours of energy consumed</li> <li>Percentage of EV ownership compared to traditional vehicles</li> </ol>

Related Categories	ID	Action	Responsible Parties	Funding Threshold	Incremental Timeline	Metrics
	<b>T.4</b>	Identify barriers to multi-modal and active transportation to overcome transportation barriers.	Development Department	Additional funding needed	<b>Long Term</b> - Identify and eliminate barriers to transportation	<ol style="list-style-type: none"> <li>1. Track accidents and congestion numbers across Grove City transportation system</li> <li>2. Number of new active transportation viable routes</li> <li>3. Frequency of transit usage in Grove City</li> </ol>
	<b>CO.1</b>	Create a Sustainable Procurement/Purchasing Policy.	Development Department	No additional funding beyond staff time	<b>Short Term</b> - Write the policy <b>Medium term</b> - Evaluate success of the policy and make any updates	<ol style="list-style-type: none"> <li>1. Percentage of procurement that is sustainable</li> </ol>
	<b>CO.2</b>	Transition City Fleet to Electric Vehicles	Grove City Administrator	Additional funding needed	<b>Short term</b> - Create a plan for transitioning vehicles over a period of time, depending on funding availability <b>Long term</b> - Transition vehicles when funding is available	<ol style="list-style-type: none"> <li>1. Number of Municipal EVs</li> <li>2. Percent of Municipal vehicles that are EVs</li> </ol>
	<b>CO.3</b>	Implement city potable water consumption policies.	Grove City Administration	No additional funding beyond staff time	<b>Short Term</b> - Create and implement policy	<ol style="list-style-type: none"> <li>1. Percent change in water consumption</li> <li>2. Volume of potable water saved (compare against old consumption numbers)</li> </ol>
	<b>BP.1</b>	Create a Grove Green Checklist	Building Department and Zoning and Ordinance Department	No additional funding beyond staff time	<b>Short term</b> - Create checklist and engage businesses around use of checklist <b>Long term</b> - Continue to revisit and update checklist	<ol style="list-style-type: none"> <li>1. Number of businesses that enroll in Grove Green Program</li> </ol>

Related Categories	ID	Action	Responsible Parties	Funding Threshold	Incremental Timeline	Metrics
	<b>BP.2</b>	Create a Grove City New Development Checklist.	Building Department	No additional funding beyond staff time	<b>Short term</b> - Create the checklist to be relevant for new developments <b>Medium term</b> - Engage with developers to encourage use of checklist <b>Longer term</b> - Continue to revisit and update checklist	<ol style="list-style-type: none"> <li>1. Number of new developments following Grove Green Guidelines</li> </ol>
	<b>BP.3</b>	Create a Green Business Roundtable	Environmental Sustainability Committee and Community Relations Department	No additional funding beyond staff time	<b>Short term</b> - Reach out to businesses to identify who would be interested in participating <b>Medium term</b> - Host round table events	<ol style="list-style-type: none"> <li>1. Number of businesses involved in round table</li> <li>2. Number of roundtable meetings</li> </ol>

## References

Aggregation Program. (n.d.). Retrieved from [https://www.cincinnati-oh.gov/oes/residential-programs/aggregation-program/#:~:targetText=Cincinnati is the 1st,250,000 tons of CO2 annually](https://www.cincinnati-oh.gov/oes/residential-programs/aggregation-program/#:~:targetText=Cincinnati%20is%20the%201st,250,000%20tons%20of%20CO2%20annually).

City Announces Electricity Aggregation Agreement with Northeast Ohio Public Energy Council. (2018, April 19). Retrieved from [http://www.city.cleveland.oh.us/4.19.2018NOPEC\\_AggregationAgreement](http://www.city.cleveland.oh.us/4.19.2018NOPEC_AggregationAgreement)

City of Columbus. (n.d.). Sustainable Columbus: Executive Orders. Retrieved from <https://www.columbus.gov/Templates/Detail.aspx?id=2147505959>.

City of Columbus. (n.d.). Sustainable Purchasing. Retrieved from <https://www.columbus.gov/finance/purchasing-office/Sustainable-Purchasing/>.

City of Dublin. (2018). Sustainability Framework. Retrieved from: <https://dublinohiousa.gov/dev/dev/wp-content/uploads/2018/09/CSAC-Recommendation-Sustainability.pdf>

City of Upper Arlington. (2019). Volunteers Needed to Remove Invasive Plant Species from Upper Arlington. Retrieved from: <https://upperarlingtonoh.gov/invasive-plant-species-in-upper-arlington/>

City of San Jose. Home Composting. Retrieved from <http://www.sanjoseca.gov/index.aspx?nid=1514>

Central Ohio Greenways, MORPC, and University of Minnesota. (2015). The Impacts of Central Ohio Trails. Retrieved from: <http://www.morpc.org/wordpress/wp-content/uploads/2017/12/The-Impacts-of-Central-Ohio-Trails--Final-Report.pdf>

Duke University Office Of Sustainability: Duke Green Workplace Certification (n.d) Retrieved from <https://sustainability.duke.edu/action/certification/workplace>

Electric Aggregation Program: Worthington, OH - Official Website. (n.d.). Retrieved from <https://worthington.org/882/Electric-Aggregation>.

Governmental energy aggregation: Local community buying power. (2011, February 12). Retrieved from <https://www.puco.ohio.gov/be-informed/consumer-topics/governmental-energy-aggregation-local-community-buying-power/>.

Grove City. (2011). Comprehensive Plan: Parks, Recreation and Open Space. Retrieved

from: <http://www.grovecityohio.gov/wp-content/uploads/2015/03/parksCompPlan.pdf>

Grove City. (2018). GroveCity2050 Community Plan. Retrieved from: [http://www.grovecityohio.gov/wp-content/uploads/2019/04/2018-01-19\\_COUNCIL\\_APPROVED.pdf](http://www.grovecityohio.gov/wp-content/uploads/2019/04/2018-01-19_COUNCIL_APPROVED.pdf)

Grow Youngstown (2013). Compost Campaign. Retrieved from [http://growyoungstown.org/wp-content/uploads/2014/09/trifold\\_CC\\_aug.pdf](http://growyoungstown.org/wp-content/uploads/2014/09/trifold_CC_aug.pdf)

Indianapolis Cultural Trail. (2019). About. Retrieved from: <https://indyculturaltrail.org/about/>

Indiana University Public Policy Institute. (2015). Assessment of the Impact of the Indianapolis Cultural Trail: A Legacy of Gene and Marilyn Glick. Retrieved from: <http://indyculturaltrail.org.s3.amazonaws.com/wp-content/uploads/2015/07/15-CO2-Cultural-Trail-Assessment.pdf>

Insight 2050. (2019). Corridor Concepts. Retrieved from: <https://getinsight2050.org/corridor-concepts/>

Kalamazoo Nature Center. (2019). Program & Events. Retrieved from: <https://naturecenter.org/Programs>

Lakewood Becomes Third Ohio City Committed to 100% Clean, Renewable Energy. (2019, October 22). Retrieved from [https://www.sierraclub.org/press-releases/2019/10/lakewood-becomes-third-ohio-city-committed-100-clean-renewable-energy#:~:targetText=Lakewood joins Cleveland and Cincinnati,and community-wide by 2035.&targetText=Lakewood becomes the 141st city,a 100% renewable energy target](https://www.sierraclub.org/press-releases/2019/10/lakewood-becomes-third-ohio-city-committed-100-clean-renewable-energy#:~:targetText=Lakewood%20joins%20Cleveland%20and%20Cincinnati,%20and%20community-wide%20by%202035.&targetText=Lakewood%20becomes%20the%20141st%20city,%20a%20100%20renewable%20energy%20target).

Michigan Department of Environment, Great Lakes, and Energy. The Recycling Raccoon Squad. Retrieved from <https://recyclingraccoons.org/>

Midtown Greenway Coalition. (2019). About the Greenway. Retrieved from: <https://midtown-greenway.org/about-the-greenway/>

National Wildlife Federation. (2019). Certify to Show Your Commitment to Wildlife. Retrieved from: [https://www.nwf.org/CertifiedWildlifeHabitat?campaignid=WH20VSY&utm\\_source=gfwhomepage&utm\\_medium=webpage&utm\\_campaign=default&utm\\_content=default\\_gfw\\_homepagesquare\\_FY20](https://www.nwf.org/CertifiedWildlifeHabitat?campaignid=WH20VSY&utm_source=gfwhomepage&utm_medium=webpage&utm_campaign=default&utm_content=default_gfw_homepagesquare_FY20)

National Wildlife Federation. (2019). Invasive Species. Retrieved from: <https://www.nwf.org/Educational-Resources/Wildlife-Guide/Threats-to-Wildlife/Invasive-Species>

Planning NEXT. (2016). Strategic Action Plan: Central Ohio Greenways. Retrieved from: [http://www.morpc.org/wordpress/wp-content/uploads/2017/12/COG\\_StrategicPlan\\_160201\\_withAppendix-FINAL.pdf](http://www.morpc.org/wordpress/wp-content/uploads/2017/12/COG_StrategicPlan_160201_withAppendix-FINAL.pdf)

Seattle Public Utilities. Green Your Business. Retrieved from <https://www.seattle.gov/utilities/businesses-and-key-accounts/green-your-business>

Smart Growth America. (2019). The Best Complete Streets Policies of 2018. Retrieved from: <https://smartgrowthamerica.org/app/uploads/2019/05/Best-Complete-Streets-Policies-of-2018.pdf>

Smart Growth America. (2015). The Best Complete Streets Policies of 2014. Retrieved from: <https://www.smartgrowthamerica.org/app/legacy/documents/best-complete-streets-policies-of-2014.pdf>

Smart Growth America. (2015). The Best Complete Streets Policies of 2014: An Ordinance Adopting The City of Austin Complete Streets Policy. Retrieved from: <https://www.smartgrowthamerica.org/app/legacy/documents/cs/policy/cs-tx-austin-policy.pdf>

Staff, G. F. (2018, July 5). Ohio City Gets Its First Electric Vehicles. Retrieved from <https://www.government-fleet.com/306081/ohio-city-takes-delivery-of-its-first-evs>.

Urban Land Institute. (2016). Active Transportation and Real Estate: The Next Frontier. The Midtown Greenway. Retrieved from: <https://americas.uli.org/report/active-transportation-real-estate-next-frontier/>

City of Columbus. (2019). Blueprint Columbus. Retrieved from <https://www.columbus.gov/utilities/projects/blueprint/Clintonville-Area/>

Roof, K; Oleru N. (2008). "Public Health: Seattle and King County's Push for the Built Environment". J Environ Health. 75: 24-27.

LEED green building certification. (2019). Retrieved from <https://new.usgbc.org/leed>.

Energy Sage. (2019). Install an EV Charging Station. Retrieved from <https://www.energysage.com/electric-vehicles/charging-your-ev/install-a-home-charging-station/>

(Dublin, 2019) Green Shamrock Program

<https://dublin.ca.gov/1369/Green-Shamrock-Business-Recognition--2>

(Jersey, 2019) Green Development Checklist

[http://www.sustainablejersey.com/fileadmin/media/Actions\\_and\\_Certification/Actions/Green\\_Development\\_Checklist/Model\\_Checklist\\_Final\\_Upload\\_2015\\_10\\_09-final.pdf](http://www.sustainablejersey.com/fileadmin/media/Actions_and_Certification/Actions/Green_Development_Checklist/Model_Checklist_Final_Upload_2015_10_09-final.pdf)

U.S. Census Bureau. (2019) American Community Survey, 2017 American Community Survey 5-Year Estimates. Retrieved from: <http://factfinder2.census.gov>. Data Retrieved: 9/24/2019

World Population Review. (2019). Grove City Oh Population. Retrieved from: <http://worldpopulationreview.com/us-cities/grove-city-oh/>

# 7

Appendix



# Goal Setting Methodology

Action Item: _____		Category: _____	
Who will be the champion of this goal (i.e. city department, committee, person, or group)?			
Who are the stakeholders?			
What type of goal applies to this action item?			
<input type="checkbox"/> <b>Process Goal</b> These goals are procedural and behavior changes (i.e. encourage composting, or fast track green building permits).			
<input type="checkbox"/> <b>Outcome Goal</b> These goals are results oriented, an outcome is targeted to be achieved after a specified period of time (i.e. build one community garden by 202X).			
<input type="checkbox"/> <b>Performance Goal</b> These goals are achieved by increasing standards and their associated results for a specific action (i.e. increase annual tree planting, increase recycling rates).			
What is the desired goal and how will it be measured?	What is the current level of attainment of this goal?	What is the difference between the current level and desired level?	
What is the time frame to achieve this goal?			
<input type="checkbox"/> Short-term (1-2 years) <input type="checkbox"/> Medium-term (3-5 years) <input type="checkbox"/> Long-term (5+ years) <input type="checkbox"/> Reoccurring cycle			
How ambitious is the desired goal?			
<input type="checkbox"/> High rank in the metropolitan Columbus area. <input type="checkbox"/> High rank in Central Ohio (MORPC region). <input type="checkbox"/> High rank in Ohio. <input type="checkbox"/> High rank in the Midwest.			

# Goal Re-evaluation Methodology

Action Item: _____	Category: _____
Have you attained your goal?	
How close are you to achieving your goal?	
Should additional stakeholders be identified?	
Does a new metric or measurement need to be used to better gage success?	
What have been the main impediments to achieving your goal?	
<input type="checkbox"/> Funding <input type="checkbox"/> Leadership <input type="checkbox"/> Strategy <input type="checkbox"/> Other?	
What steps should be taken next in order to achieve the goal?	



# Goal Setting Methodology

Action Item: <u>Create community gardens</u>		Category: <u>Natural Environment</u>	
Who will be the champion of this goal (i.e. city department, committee, person, or group)?	Parks and Recreation Department		
Who are the stakeholders?	Funding groups, Community residents, Local schools		
What type of goal applies to this action item?			
<input type="checkbox"/> <b>Process Goal</b> These goals are procedural and behavior changes (i.e. encourage composting, or fast track green building permits).			
<input checked="" type="checkbox"/> <b>Outcome Goal</b> These goals are results oriented, an outcome is targeted to be achieved after a specified period of time (i.e. build one community garden by 202X).			
<input type="checkbox"/> <b>Performance Goal</b> These goals are achieved by increasing standards and their associated results for a specific action (i.e. increase annual tree planting, increase recycling rates).			
What is the desired goal and how will it be measured?	What is the current level of attainment of this goal?	What is the difference between the current level and desired level?	
To create a community garden for each neighborhood and increase local grown food production. It could be measured by food production, residents' participation, donation of the food and market sale.	No current attainment	A community garden for each community.	
What is the time frame to achieve this goal?			
<input checked="" type="checkbox"/> Short-term (1-2 years) <input type="checkbox"/> Medium-term (3-5 years) <input type="checkbox"/> Long-term (5+ years) <input type="checkbox"/> Reoccurring cycle			
How ambitious is the desired goal?			
<input checked="" type="checkbox"/> High rank in the metropolitan Columbus area. <input type="checkbox"/> High rank in Central Ohio (MORPC region). <input type="checkbox"/> High rank in Ohio. <input type="checkbox"/> High rank in the Midwest.			

# Goal Setting Methodology

Action Item: <u>Enhance access to EV charging stations</u>		Category: <u>Transportation</u>	
Who will be the champion of this goal (i.e. city department, committee, person, or group)?	Sustainability Committee		
Who are the stakeholders?	Local businesses, Vehicle owners, Car dealerships, Transit agencies		
What type of goal applies to this action item?			
<input checked="" type="checkbox"/> <b>Process Goal</b> These goals are procedural and behavior changes (i.e. encourage composting, or fast track green building permits).			
<input type="checkbox"/> <b>Outcome Goal</b> These goals are results oriented, an outcome is targeted to be achieved after a specified period of time (i.e. build one community garden by 202X).			
<input checked="" type="checkbox"/> <b>Performance Goal</b> These goals are achieved by increasing standards and their associated results for a specific action (i.e. increase annual tree planting, increase recycling rates).			
What is the desired goal and how will it be measured?	What is the current level of attainment of this goal?	What is the difference between the current level and desired level?	
Enhance connectivity of EV charging station network in Grove City. Performance measured by number of EV's operated, charging output per station.	Grove City has not yet attained a comprehensive EV charging station network.	Identification of EV station sites and installation of the stations around Grove City will result in goal attainment.	
What is the time frame to achieve this goal?			
<input type="checkbox"/> Short-term (1-2 years) <input checked="" type="checkbox"/> Medium-term (3-5 years) <input type="checkbox"/> Long-term (5+ years) <input type="checkbox"/> Reoccurring cycle			
How ambitious is the desired goal?			
<input checked="" type="checkbox"/> High rank in the metropolitan Columbus area. <input checked="" type="checkbox"/> High rank in Central Ohio (MORPC region). <input type="checkbox"/> High rank in Ohio. <input type="checkbox"/> High rank in the Midwest.			



# Goal Setting Methodology

Action Item: Improve social media and publication presence... Category: Community Engagement

Who will be the champion of this goal (i.e. city department, committee, person, or group)? Head of Community Relations Department

Who are the stakeholders? Community residents, Grove City, specialty non-profits

What type of goal applies to this action item?

Process Goal  
These goals are procedural and behavior changes (i.e. encourage composting, or fast track green building permits).

Outcome Goal  
These goals are results oriented, an outcome is targeted to be achieved after a specified period of time (i.e. build one community garden by 202X).

Performance Goal  
These goals are achieved by increasing standards and their associated results for a specific action (i.e. increase annual tree planting, increase recycling rates).

What is the desired goal and how will it be measured?	What is the current level of attainment of this goal?	What is the difference between the current level and desired level?
Add a sustainability webpage to the Grove City website and increase social media output. It can be measured by the number of views, likes, shares, comments, etc.	Thus far, little progress has been made on this action item outside of Sustainability Committee outreach/postings.	Lack of a dedicated sustainability webpage and insufficient number of social media postings.

What is the time frame to achieve this goal?

Short-term (1-2 years)  
 Medium-term (3-5 years)  
 Long-term (5+ years)  
 Reoccurring cycle

How ambitious is the desired goal?

High rank in the metropolitan Columbus area.  
 High rank in Central Ohio (MORPC region).  
 High rank in Ohio.  
 High rank in the Midwest.

# Implementation Framework Draft

Framework			
	Action Item #1	Action Item #2	Action Item #3
	Enhance connectivity and access to EV charging stations Sustainability Committee	Create community gardens to engage residents and encourage locally grown foods Parks Board/Development Dept	Improve social media and publication presence Community Relations Department
<b>Champion Funding</b>			
Federal	U.S. Department of Energy/Loan Programs Office <a href="https://www.energy.gov/sites/prod/files/2016/07/f33/Guide%20to%20Federal%20Funding%20and%20Financing%20for%20PEVs%20and%20EV%20Charging.pdf">https://www.energy.gov/sites/prod/files/2016/07/f33/Guide%20to%20Federal%20Funding%20and%20Financing%20for%20PEVs%20and%20EV%20Charging.pdf</a>	USDA Community Food Competitive Grant Program <a href="https://nifa.usda.gov/program/community-food-projects-competitive-grant-program-cfcgp">https://nifa.usda.gov/program/community-food-projects-competitive-grant-program-cfcgp</a>	
State	ODSA Alternative Fuel Transportation Program <a href="https://development.ohio.gov/cs_grantsloansbonds.htm">https://development.ohio.gov/cs_grantsloansbonds.htm</a>	Mid-Ohio Foodbank Urban Agriculture Grant <a href="https://www.midohiofoodbank.org/urbanagriculturegrant/">https://www.midohiofoodbank.org/urbanagriculturegrant/</a>	
Local	Community residents and business investment	The Columbus Foundation Urban Gardening Grant <a href="https://columbusfoundation.org/nonprofit-center/grant-opportunities/columbus-foundation-grants/urban-gardening-grant">https://columbusfoundation.org/nonprofit-center/grant-opportunities/columbus-foundation-grants/urban-gardening-grant</a>	Grove City (As needed)
Creative/Other Funding	AEP Equipment Charging Incentives <a href="https://www.aepohio.com/save/business/ElectricVehicles/">https://www.aepohio.com/save/business/ElectricVehicles/</a>		
<b>Stakeholders</b>			
	Local businesses	Funding groups	Grove City
	Vehicle owners	Specialty non-profit organizations	Community Residents
	Car dealerships	Community residents	Specialty Non-Profits
	Transit agencies	Local schools	
<b>Grove City Departments</b>			
City Council			x
Development	x	x	x
Finance			
Parks and Rec		x	x
Administration			x
Building and Zoning	x		
Human Resources			
Mayor's Office			x
Mayor's Court			
Public Service			x
<b>Safety and Legal</b>			
(1) Division of Police			
(2) Jackson Township Fire			
(3) Legal			
<b>Approvals</b>			
City Council	x		x
BZA			
Planning Commission		x	
Park Board		x	
Engineering	x		
Procurement			
HOA		x	
<b>Maintenance</b>			
Park & Rec	California Department of Parks and Recreations <a href="https://www.envisionsolar.com/california-department-of-parks-and-recreation-selects-envision-solar-ev-arc-solar-charging-stations/">https://www.envisionsolar.com/california-department-of-parks-and-recreation-selects-envision-solar-ev-arc-solar-charging-stations/</a>	N/A	
Public Service	Electric Vehicle Charging Infrastructure <a href="https://smart.columbus.gov/projects/electric-vehicle-charging-infrastructure">https://smart.columbus.gov/projects/electric-vehicle-charging-infrastructure</a>	N/A	x
Third Parties	Private Developers and Business Owners who install EV charging infrastructure	Urban G.E.M.S. Ohio State <a href="https://urbangems.ohio.osu.edu/">https://urbangems.ohio.osu.edu/</a> Volunteer residents / Garden users	
<b>Time Frame</b>			
3 months	Establish EV charging station implementation policy	Identify appropriate space for the garden and secure funds. Research partnerships with local food banks or restaurants to reduce food waste.	Redesign social media platforms, Gather information for web pages
6 months	Begin rollout of EV charging station infrastructure	Evaluate land, perform soil tests. Build community garden and do community outreach (social media, website, educational fliers) to find community members to participate	Create webpage on Grove City's website
1 year	Evaluate existing EV stations based on performance metrics	Maintenance and continue educational outreach around the garden	Finish and publish webpage
3 years	Continue to monitor station performance, adjust station locations as needed	Continue garden maintenance. Assess productivity and functionality of the garden. Consider expansion to other sites city-wide. Identify other funding options	Continue to monitor web page performances, and update information as needed
5 years	Collect data on EV vehicle ownership and usage in Grove City	Continue garden maintenance. Assess productivity and functionality of the garden. Consider expansion to other sites city-wide. Identify other funding options	Continue webpage maintenance
Other:			

# Online Survey Full Database

Constant Contact Survey Results	
<b>Survey Name:</b> Sustainability Plan Survey	
<b>Response Status:</b> Partial & Completed	
<b>Filter:</b> None	
Nov 05, 2019 3:37:41 PM	
<b>1. When recycling, which method do you use: - Other responses</b>	
	<b>Answer</b>
	I live in an apartment and the complex picks up my recycling
	composting
	Reuse
	composting
	plastic grocery bags to stores
	Our apartment doesn't have recycling so we take it to the fire station off 665
	We have a container - it is too small for family of 5
	composting
	Retailers plastic bag recycle
	Whole Foods program, recycle bags at Kroger
	Ingestion
	Recycling bins
	Recycling contractors
	Taking in in exchange for money, like aluminum cans.
	Drop off cardboard at dumpster in the town center
	I recycle items often, use itemd for other uses.
	Whole Foods #5 drop off
	Vendor/Store recycling stattiions
<b>2. If you do not recycle, what deters you from recycling: - Other responses</b>	
	<b>Answer</b>
	some materials
	lâñ not crazy
	items cannot be recycled
	Comment Below
	I do recycle
	cost to recycle is too expensive
	I recycle
	I do recycle
	See comment
	See below
	Do no have indoor recycle container.
	I reuse many items, always have.
	I do recycle

2. If you do not recycle, what deters you from recycling: - Comments	Answer
	Though we do recycle, clearer information about what is/is not acceptable would be very helpful!
	It's not always clear what is recyclable and what isn't, particularly with plastics.
	I do recycle but sometimes it is very confusing what is ok and what is not.
	To picky on what goes and don't go!!
	Disappointed in SWACO, not a full service recycler They want the \$\$ but not the items with little value
	It's a shame that we aren't able to recycle more of the plastics (all of numbers 1-5) curbside.
	Many products are packaged in materials that cannot be recycled. Why do we even permit that?
	There is an inconvenience when we have to recycle our plastic wrapping (ie bags, plastic casing around a pack of water bottles) at a grocery store. We need a program which allows plastic bags to be recycled from home. Also, I own a business in downtown Grove City and we go through a lot of cardboard and would like to have another recycling dumpster. The current one, behind Carters Bar, fills up very fast and we have to then result to throwing it into the trash.
	Please offer more recycling options. I have to throw away lots of recycling because you don't accept it.
	We always recycle.
	Would be helpful to have more dumosters around town for when i want to trash more then my curbside container holds
	keep the recycling going!
	Knowing that SWACO does not take many plastics has me throwing away much more than I used to.
	I recycle, but I had to do some research on what items our community can and cannot accept as different areas have different recycling machines. More information readily available to the public would be awesome!
	Our household recycles more each week than we place in the trash for the landfill. We used to recycle more but now follow the latest guidelines.
	Don't have a convenient method. Need in the kitchen options vs a different dumpster outside.
	We're a manufacturing business located in Grove City and are committed to recycling as much waste as possible, despite the cost. Finding industrial recycling contractors is difficult and expensive.
	Where I currently live there isn't a recycling option. Only a trash option. Because it isn't available to other residents, people just don't recycle.
	I recycle.
	I live in an apartment complex. Wish recycling was available.
	Don't like paying for it
	Do not have indoor recycle container.
	There's still a lot that we can't recycle at the curb. A lot of plastics are not acceptable. This needs to be changed there are a lot of recyclable plastics. That are not being accepted now.
	Need a plastic bag recycling plan.
	I think recycling should be required.
	I do keep some items to take to the recycling dumpsters at Station 203. However, I would be more apt to recycle more if it were available in my community (Parkway Village).

	All households received large and special Recycle Containers over one year ago, so special trucks could automatically pick up and empty those huge recycle containers. Our Trash and Recycle Pick-up Service continues to use regular garbage trucks that are not equipped to do that. To this day, the huge special containers are picked up and emptied by hand. Looks like a waste of money to have supplied all households with those huge special recycle containers. Why?
	I recycle but not so much with the trash pick up. I'm not so sure it's even being recycled. Learned recently there is very little actually recycled from what is set out.
	I do recycle but there needs to be more awareness about what can go into recycling bins. I always forget so maybe a fridge magnet or something easy to reference.
<b>1. What kind of community engagement would you like to see in Grove City related to sustainability? - Other responses</b>	
	<b>Answer</b>
	I would like the city to lead by example
	Eliminating plastic and single use items
	school outreach to teach good sustainability practices to kids
	None
	places to recycle things like plastic bags, construction materials, and rx drugs
	?
	Especially cigarettes
	other forms of diversion such as donations, repurposing, etc
	recycling and composting emails would be fine.
	Recycling at all GC events/downtown
	Swap meets for reuse
	Protecting pollinators, gardening
	Taking care of water shed
	Green living
	Plant a tree events and a grant opportunity for those wanting to install solar
	increase what can be recycled
	events that foster community improvement to make community stronger, inclusive
	Drop off sites for things like paint.
	DIY classes on being more sustainable (rain water systems)
	mud wrestling with little people
	Proper Outdoor Lighting
	Sell a sectional trash can at the Grove City store.
	Business related support.
	Annual re-education fliers about what to do and not do
	Less engagement
	Speaker Series
	Community gardens
	Bicycle infrastructure improvement. safe ways for ppl to use bikes for transport
	Clean energy initiatives
	Program to help home owners switch to sustainable home energy
	Stormwater mitigation education / rain barrel incentives
	Something that can actually be done consistently by most

	Education on the amount of recyclables in the landfill
	Mailing more information. More social media on recycling.
	Green Infrastructure - Low Impact Development
<b>2. Other than EcoFest, what kind of sustainability-focused events would you like to see? Please explain. - Responses</b>	
	<b>Answer</b>
	Neighborhood focused events.
	Something that teaches people ways to 'reuse' items instead of throwing them away or recycling them. Focusing on re-usable products like beeswax wraps instead of single use plastics, etc.
	Educational Workshops
	Basically what is mentioned in question 1 above, providing community clean-up events and classes on how to recycle and compost, but also maybe some classes on water quality such as how to use a rain barrel or how to create a rain garden on your property.
	Come up with better events other than Ecofest
	School interaction, student ran projects.
	More general public education.
	Many residents do not have access to vehicles that would aid them in cleanup and recycling of items like the Jackson Twnshp program twice a year. I believe the City could offer a program to do a one or two day program if maybe by resident call for pick up (curbside)
	Topic-based educational events to teach people how to integrate sustainability practices in their everyday lives (low impact lawn care, how to grow your own food, how to reduce single use plastics, composting, available home energy programs --> AEP does a lot with this for communities)
	None
	Social media info sent out and available to access
	A sustainability club for teens because it really starts at that age. The club could host a student-run secondhand store or a hosted a pop-up clothing sale to encourage students to purchase recycled clothing; or say a competition to see which students could sort a pile of trash the fastest into landfill, compost, and recycling piles, etc.
	Solar and wind power, doing away with fossil fuels of all kinds by 2030.
	Brief educational seminars on how to recycle
	none
	Last festivals and more action
	Incentives for businesses and homes. Events surrounding food waste diversion - what to do with excess, cooking classes, storage classes.
	SWACO tours. Education on what really happens with recycling and composting - many rumors out there.
	Let the experts decide.
	More parks, green areas....education in SWCSD schools, classes for composting and gardening (food, herbs) and info on using reusable bags, containers...clean products that are environmentally friendly
	Tho I said recycling classes most people won't attend a class . They MAY read a simple post card with some basic info.
	A place to recycle things that Swaco doesn't accept, such as plastic where the mouth is not smaller than the body
	Water Usage Education
	More climate-related issues/problems. such as solar energy being used more, recycling events more than once a year (for unused paint, etc.) and recycling information at the S.A.L.T meetings for seniors (or something like the SALT meetings.)

	Keep it in mind- fun activities throughout the year. IT does not have to be as large as EcoFest- one each quarter with different focus; ex: Fall Making leaf humus Winter: composting Spring: gardening with native plant
	* Gardening * Solar energy
	None don't waste city money on these type of events.
	Continue with the rain barrel classes
	Community involvement in cleaning up metro parks, community garden, tree planting days, organized trash cleanup
	Earth Day activities/event Swap events (one person's trash is another's treasure) i.e. baseball equipment swap before baseball season, yard tool swap in spring, baby needs swap...
	Educational opportunities would be great
	Bring back the "waste not center" that used to be in Columbus. Companies & individuals would drop off unwanted items at the center. "shoppers" would pay a membership fee to shop. The old WNS closed a few years ago because they no longer could afford the rent/utilities. Need a company to donate space. So many people want to see it return.
	Watershed is polluted garbage which floods residential areas when it rains
	clean up events for run down properties. some home owners are bed ridden, old, or just have no clue on how to maintain their yards or homes. also, some homes could just be abandoned
	None
	Recycling bins and signs in schools and parks I have to bring home my bottles f try on school events as I do not see any place to recycle
	Educating people about reducing and reusing as well as recycling. For example, classes on cloth diapering, encouraging shopping second hand, reducing single use products, etc. Maybe pop-up events for sellers who make reusable products.
	Not sure. What's available.
	Sustainable energy (I.e. solar, electric/CNG vehicles)
	Education on renewable energy sources and how the city is preparing for the future
	River clean up Tree planting
	promote planting of trees and shrubs. Promote planting of plants for butterflies and bees. Make people aware of which lawn/plant poisons are hazardous for which insect.
	Door-to-door informational sessions about recycling
	Smart home energy efficiency
	Not impressed with EcoFest.
	Additional community hazardous waste / shred/ electronic drop off days, other than on weekends.
	Smaller EcoFest in each of community parks, many can not come to one. If each park had one then if you missed one you could come to another. Get the business to support each one.
	Encourage and promote expansion of the farmers/harvest market
	What to do with all the recyclable materials that aren't accepted locally.
	Energy and water conservation
	inform residents from time to time to keep trash picked up around their property and on their respective streets. If only people would talk to each other more often, instead of avoiding their own neighbors.
	More public cleanup events
	An event that focuses on sustainably made products (biodegradable packaging, low water and energy consumption in production).
	Water ways clean up

	Something focused //specifically// on the biking and walking friendliness of Grove City.
	Monthly or quarterly disposal events.
	I'm not sure
	EcoFest was great, Possibly have something similar in the fall or early spring on a smaller scale. Have information available at some of the shops in downtown Grove City such as a pamphlet that provides information on recycling (people don't know where to get information)
	More information in schools regarding recycling and sustainable living.
	Grassroots effort to reach out to residents to explain the importance of sustainability, recycling, composting. I see too many residents ignoring this critical need either due to lack of awareness or old environmentally unfriendly habits
	Continue the hazardous waste and old medicine drop-offs. Add oil recycling and perhaps have these clean up events 3 - 4 times a years instead of two.
	book burning
	In addition to community-wide programs, information about steps that individuals and families can take to support sustainability.
	Composting education and drop-off and local grocery stores. Partner with local orgs to make it easy to compost where the community already goes weekly.
	Teaching our community members correct way to recycle, keep yards clean, encourage each community to have compost program.
	Outreach in local churches.
	Cooking classes!!!. Meal planning. Shopping. Local sales. Local farmers. Health education about food. Freezer meals. All to reduce food waste that spoils in our fridge. How to feed the family without the stress and anxiety. It's surprising how many families struggle with this. Hence why so many fast food places (pizza) & obesities.
	Just more of them. More options. Maybe an Earth Day event. Maybe a vendor expo for more options.
	Can we get bat houses placed around the ponds to decrease mosquitoes instead of spraying
	I don't have any idea, I am sorry
	Education about recycling and composting in schools
	Education about water conservation, programs to help businesses and other community entities institute recycling and energy management
	Community garden education events.. or individual garden development and maintenance education workshops or events.
	Clean up events that children can participate in
	Can the city back out of EcoFest?
	Recycling availability events for those who do not recycling available.
	Host a speaker series, bringing in experts on different topics. Offer a variety of topics. Perhaps partner with the library or school district.
	-Classes on growing own food included vegetables, fruit trees, and berry bushes -canning classes (pressure canning especially) -composting, I would prefer curbside service, but if not available how to do that it my backyard
	More city-wide clean-ups like those in the past (freeway ramp cleanups, Scioto Grove cleanup)
	More opportunity to dispose of tires.
	No preference at this time.
	You need to quit hurting your businesses. They are your tax base. Yet you do not allow new modern signage I'm talking about electronic changeable copy signage. In fact you only allow your government to have them at the fire stations. Many would support the community on these electronic billboards. We need to get out of the Dark Ages.

	Clarification in the local paper about what can and cannot be recycled. Also tips on avoiding food waste, over use of electricity, and other sustainability issues.
	Alternative Transportation Event: Bicycle training/education for motorists and cyclists. Try out a Cota Bus. Establish a Carpool network and have sign-ups. "Safe routes to School Organization". Try out an E-bike.
	Ecofest was great for informational resources. But it had very few hands-on classes. IE: here's how to build a compost bin, tours to teach how to identify plants/trees and how to take care of them, especially native varieties. Tours could lead groups through downtown or other key areas of Grove City.
	Centralized Food Waste Composting Collection. I am afraid that when the word "composting" is used in this survey that some people may not think of it as "food waste composting" but rather "yard waste composting".
	See above, helping homeowners switch to sustainable home energy.
	Anything! Weeknight farmer's markets would be great. Educational meetings, mini events at parks, etc.
	Not sure
	Informational videos, social media posts, and newsletter outreach.
	Initiative for a "bike to work" or "bike to school" day. Increased signage or campaign to "share the road" and abide by the 3 foot rule
	Have the Mayor of Grove City explain why those huge special Recycle Containers were issued to all households for no apparent purpose.
	Any open forums or panel discussions, nothing that will cost tax dollars though
	solar panel discussions, consideration for 2-3 chicken allowance on Grove City properties
	Community curbside free exchange for household items . Got the idea from worthington's "precycle days"  upcycling workshops or events  workshops or educational events for members of the community that focus on teaching how to make repairs to appliances and other household items to prolong the appliances lifespan
	I can't always attend things so you better get info out.
	Something weekly at Farmers Market or at the Grove City Shop in downtown Grove City
	More get out and volunteer type events. Rewards for participation with younger folk
	More clean up days, better communicated when happening.
	I'd love to see a tour of the recycling facility. Maybe posted on youtube or something.
	Green Infrastructure (GI)- Development (or redevelopment) that balances natural and engineered systems to manage storm water, conserve natural/ecosystem functions.  Town Center is particularly vulnerable to storm events/flooding. GI could help address failing undersized/infrastructure (e.g. storm sewers) and provide aesthetic value in urban
<b>1. In order to create a community that is environmentally healthy for our residents and wildlife, what types of programs would you like to see the City foster to maintain sustainable habitats and encourage a healthy, balanced environment? - Other responses</b>	
	<b>Answer</b>
	alternative energy sources for all public buildings (solar, geothermal)

	Trees
	None
	Create/leave natural areas
	rain gardens
	promote proper home integrative pest management to try to minimize excess materia
	More natural public parks
	Offer free tree planting and healthy tree education
	not revelant
	Establish wildlife sanctuaries
	Ban neonicotinoids
	More advanced public recycling cans
	Stop over building without planning and infrastructure.
	More green space
	Nature center at Scioto Grove metro park
	none
	increase public awareness of what helps and what hinders clean air
	Butterfly house
	less building
	Clean energy initiatives
	Nature preserves and natural parkland
	Bird watching areas
	Maybe offer educational tours of locations that model sustainable projects
	add those rain gardens by streets
	Stop taking up all the green space
	Reduce mowing of selected areas in parks to allow natural regeneration while
	All of above
	Green Infrastructure - Low Impact Development
<b>1. In order to create a community that is environmentally healthy for our residents and wildlife, what types of programs would you like to see the City foster to maintain sustainable habitats and encourage a healthy, balanced environment? - Comments</b>	
	<b>Answer</b>
	(1) Become a more bike friendly city, (2) get more high paying jobs in the city to decrease commuters to and from Grove City and Downtown Columbus or other areas of the region, (3) stream protection/stream restoration, (4) rebate program for property owners to adopt low impact lawn care or native landscaping, which helps to reduce stormwater issues and increases biodiversity
	ban plastic bags
	Rain gardens especially just up land from creeks, North of Republican Run,etc. Use curb lawns where no sidewalks for rain gardens, i.e. R/W to curb, you already own the property. End use of single use plastic within city limits, plastic bags, straws, etc. Cigarette butts a misdemeanor
	It's hard to balance a healthy environment when you have a Landfill in your backyard that reeks of odor

	Mulberry run and republic run still have septic systems that empty into them the city had opportunity with white road rebuild to assist with eliminating the septic systems. they did not both of those runs combine and go through the Pinnacle.
	IT is really easy to have a certified backyard habitat through NWF. GC should definitely partner and support this program.
	Concern over coyote sightings. Wildlife is good but in a residential area like Grove City, there are conflicts between wildlife and humans. Humans must not be put at danger.
	Would love more info on community gardens and wildlife
	I think both of these would be helpful to individuals and nature
	Stop killing everything to build more houses
	Stop the rapid expansion of housing that is destroying the homes of our wildlife
	Do we have a feral cat program where they are captured and neutered, then released? Is it possible for Grove City to have a pet shelter for homeless or lost animals? I know some senior citizens would be available to help out there.
	Ban herbicides, ban pesticides, ban grass mowing. Why are any of them needed?  That neighbor out there with the roundup in hand spraying the crack in their sidewalk is simply a race to the bottom.  Once a year grass mowing would be fine, late in the year after things are dying off for winter.
	Currently, the city has a trash can and a recycling can in the downtown. The city should implement proper recycle bins for sorting, such as a bin for glass, a bin for cardboard, a bin for metal, a bin for waste.
	None like the metro park do this city should not spend money on this.
	Involve the schools in environmentally thoughtful programs: maintain the community garden, educate more about their individual impact of the earth
	Residents on my street who insist on feeding birds are attracting mice, rats, racoons and opossum, rabbits, squirrels. I've had all these critters in my yard because of all bird falling on the ground. When I kindly asked my neighbor (with whom I have a good rapport) to please STOP, she spitefully added another bird feeder to her collection. People have got to start using their heads. God provides..the birds don't need our help, especially when the result is unwanted critters.
	Something like the area at Prairie Twp Community Center where they have a pollinator friendly area complete with a bee hive
	The city water quality is very poor. At times you can smell the chlorine in the water when you turn it on.
	Community gardens are a horrible idea that are frequently abandoned once residents realize how difficult it is and how little return there is.
	Tree planting
	Our HOA does not allow composting or use of rain barrels or using shelters over gardens to increase growing period. Make HOAs take this out of covenants.
	Overall education
	Buy the land at the corner of Buckeye Pkwy and make it a field of trees. Kind of like the field of corn in Dublin. Or a dog park. People already take their dogs out there.
	Focus on monitoring water along waterways running through neighborhoods, campaign for ZERO trash in waterways (lots of creeks in neighborhoods have discarded bicycles, chairs).
	Add an educational beehive/beekeeper partner to a City park.

	Pinnacle is a huge development with no safe way for residents to cross Rte. 104 to get to a metro park. Imagine running across it pushing a stroller, and holding the hand of another child. Crazy. Traffic goes freeway speed on that road. Build a bridge over 104, like other communities would. A stop sign installation is just anticipation of the first pedestrian fatality.
	We are losing the battle of a healthy balanced environment in Grove City as more and more land is being developed for single and multi-family housing without consideration of the impact on the natural landscape and animal habitats. We are a city of trees that continually cut them down for new developments.
	Keep the parks maintained and inform residents and lawn fertilizer companies to blow the fertilizer pellets off the sidewalks after applications. Kids and pets walk through this stuff all the time. The Chemlawn's and Tru Greens of the world don't clean up at all, anywhere! Need some enforcement or letters sent to every company and in public information blasts for do-it-yourselfers.
	Promote bus service usage for youth instead of using car as only transportation
	We have noticed that many central Ohio communities have community gardens and appear to be successful.
	We need more programs at our metro park. More community meet ups. For example walk with the pups. Or creeking and animal study. Maybe dog festival. Like wag fest. Or just more monthly weekly get togethers. Too many isolated lonely people who are afraid to get out alone.
	How about large fields for pollinators? I've always thought the large field between Buckeye Pkwy and Holton that runs behind the fire station would be ideal of a huge field of flowers and other plants for pollinators. Beehives could be maintained as well.
	Hold more events. Have an article in the Grove City Magazine.
	Quit building so many developments and focus on green space. Instead of building on all the available farm land, use it for green space or offer incentives for farms yo come here
	Keep planting trees!
	I would love to see some public education about what types of materials are permitted (and are not permitted) to be burned in outdoor home fire pits.
	Stop building on our green space! Leave our fields intact on Borror and off Buckeye Parkway.
	Stop approving new developments where there is currently green space or farm land. The roads will not support the increased traffic so even more space will eventually be taken to widen the existing roads. Most of the wildlife I see are the dead animals on the side of the road because their habitats are being taken over for new housing developments.
	All of this sounds like a plan to waste valuable resources (i.e. taxpayer dollars).I am against such waste.
	A tour of Grove City's "backyard habitats" would be a fun competition to conduct each year. Or just for show!
	More nature preserves and natural explorable natural parkland
	I'm very interested in any way to increase community interaction and awareness of wildlife and gardening.
	Wild flowers planted in vacant areas,
	Stop taking up all our green space for these wasteful apartments!! You are killing the wild life off - taking their homes!! Apartments are adding more waste to our community (trash/pollution/etc). Enough is enough STOP WITH THE APARTMENTS ANS GROWTH WE ARE A SMALL CITY WE ARE NOT DUBLIN ETC AND NEVER WILL BE!!! This all equals more green space taken with the builds!
	Increase public awareness about how to peacefully coexist with wildlife, Ohio Wildlife Center was at Ecofest. They do an incredible job educating on this..
	I need to think abt thismore
	removing invasive plant species. Planting and maintaining native grasses and wildflower areas.
	All sounds good to me.

	Prioritizing green infrastructure and low impact development to manage storm water.
<b>1. What practices do you already engage in to reduce energy usage in your home or at work? - Other responses</b>	
	<b>Answer</b>
	Turn off lights when leaving the room
	Geothermal
	turn computers, printers off
	avoid heat drying dishwasher
	Limit usage of my HVAC systems
	Solar power both passive and active
	Evaluate energy consumption every 6 months for ways to improve.
	Solar panels, electric car, bicycles, limited AC usage
	plan trips to keep gas usage minimized
	just pay more attention to conserving
	turn lights out when you leave room
	Panelized low voltage lighting system, 60% more efficient led mirus adapted tech
	Turn off lights in unoccupied rooms
	Unplug/turn off appliances and turn off lights unless needed
	Turn of lights when leaving room
	installed high efficiency hvac
	Consciously turn off lights. Have Energy Star appliances.
	AEP energy bridge & app
	All lighting in our facility is now LED
	drive a hybrid car
	Turn off lights, cold water only for laundry, don't use oven on hot days,
	Common sense usage of energy
	Use natural lighting as much as possible
	Unplug when not in use
	All our waste water is reused twice, LEDs in all bulbs, energy efficient equipme
	Do whst I can without spending extra money
	shutting off unused lights and unplugging things not in use.
	Window weather proofing.
<b>2. Have you considered programs to utilize renewable energy in the place of coal-generated power? - Other responses</b>	
	<b>Answer</b>
	None
	Wood burning stove for heat
	Hydro Power
	Nuclear
	Hand/ leg crank
	See comment below
	Have signed up for electric supplier that uses clean energy via credits
	nuclear
	No

	Natural Gas
	nuclear fission
	No
	They exist in our area?
	Hydro electricity
	Yes
<b>2. Have you considered programs to utilize renewable energy in the place of coal-generated power? - Comments</b>	
	<b>Answer</b>
	Allow homes to install roof solar systems.
	I rent, so this is not an option for me, but encourage landlords to look into these programs
	No
	Considering installing solar panels on my home, but not certain if allowed. My parents use in Arizona and save a tremendous amount of money on their electric bill.
	Would like to, just not sure how to go about that
	Not just coal, natural gas also.
	I don't think the above mentioned types of power are suitable for Ohio weather
	I've worked with many projects with solar energy would like to continue to work with solar energy. Would like to see the city have more solar energy buildings
	Living in an HOA community these are not permitted.
	Right now gas has replaced some of the coal fired units storage batteries are expensive, and create their own environmental issues in the by products during production.
	would love to have a solar panel
	Would like to consider solar power but it seems expensive and difficult to understand
	Not yet
	I don't believe either of them is practical in central ohio
	Not sure why you mean here.
	The City should implement an "award system" for residents and businesses. Such as a lower tax rate for "X" amount of time for putting solar panels on their home/business.
	The cost of those options is way to high. Keep out coal miners employed use more coal for electricity. I also don't want more charging stations why should the city pay someone's electric bill for their car.
	Not at this time.
	Cost is very high for single family home
	No
	I am a strong proponent of renewable energy. The city can attract new, innovative employment opportunities by adopting renewable energy.
	I have considered such alternatives but if you look closely, the negative impacts are just as bad for wind and solar. When you consider manufacturing, servicing, end of life and other factors (including the impact the wild life like birds being killed), wind power does NOT make sense. Consider this one example: <a href="https://www.energycentral.com/news/retiring-worn-out-wind-turbines-could-cost-billions-nobody-has">https://www.energycentral.com/news/retiring-worn-out-wind-turbines-could-cost-billions-nobody-has</a> . Please consider the FULL cost of such programs before proceeding.
	The slope of our roof does not allow for efficient use of solar power.
	Too expensive

	Too many birds are hurt with wind power.
	No, ROI is still too long.
	I worked with solar power and gained a major appreciation of the potential benefits
	We should allow the market to determine our energy sources and not rely on tax payer subsidies. When solar and wind are more affordable and just as reliable as sources like natural gas (which also occurs naturally, burns cleanly and is often replenished by naturally occurring events) then, those sources will be used more.
	I am interested in the Tesla solar shingles. I would like to explore solar as a supplemental power option but find traditional panels unsightly.
	Love these ideas but Ohio weather doesn't make for good solar / wind.
	Needs clarification in building codes too.
	Would love to know what vendors Grove City recommends for solar power. I'm considering for my house.
	Very interested in both, but currently not sure what that would entail.
	We considered solar at one time, but the panels would be on the front of our house and we felt they would detract from curb appeal.
	Wasnt sure if solar would be permitted in The Landings.
	These are all too expensive on the initial upfront cost and pay back is too long. Equipment will break down and need maintenance before payback is reached.
	I am disheartened that because I drive a hybrid car with partial zero emissions, I will have to begin paying an annual fee of \$200 to the state of Ohio beginning next year. Drivers with gasoline powered cars, however, will not. This tells me that the state government of Ohio does not really care about the negative impacts of fossil fuel based energy, or clean air.
	So expensive, and not sure my HOA would approve.
	I wish we could. We live in condos. It would be wonderful because we have some extra land we could use for this.
	My house would be perfect for solar panels, but I don't know what to look for to know who good companies are, or what I should look for.
	We're interested, but it's still too expensive.
	It would depend on the cost of alternate power.
	Neither wind nor solar power have yet reached a sustainable level of reliability. Someday they probably will. Until then we should not force these more expensive, less reliable options on consumers. Let the free market work and it will bring these things into use as they become viable.
	Solar power for sure! Just not in the budget right now.
	If there are programs to utilize renewable energy in central ohio I am very interested, but am unaware of such a program.
	Still too expensive
	I would consider either when I own a home, but I don't have these options currently as a renter.
	Not for my apartment but encouraging church to go solar
	Many of us live under the guidance of home owner associations. Easily installed and unobtrusive products such as shingles, tiles and films could more easily gain acceptance.
	Would love to but too expensive. No true incentives thru AEP.
	Don't know enough information to begin or how to bein using renewable energy. Or how much it costs to be set up for renewable energy.
	Our HOA prohibits solar panels so I would like to see more education and incentives for solar panels.
	I would love to but need more knowledge on the subjects and the funds to be able to do them.
<b>3a. If yes, where? Check all that apply. - Other responses</b>	
	<b>Answer</b>

	Large employers
	City parks and COTA Park and Ride
	Downtown "city" lots
	None
	all public lots downtown
	Homes
	Grocery stores
	Large neighborhoods
	Parks
	City BBQ, Schools, soccer fields
	Resident EV Program
	Public parking areas
	COTA Park n ride
	Shopping stores, such as Kroger
	Parks
	Mixed feelings on electric cars since most of our electric is not clean energy.
	Downtown Grove City
	Personal
	School, hospitals
	More public lot charging, electric charging stations
	Public Parks and Facilities (& YMCA)
	Put all of them at the garbage dump
	Public parking lots.
	Parking lots
	Walmart and target shopping centers
	public parking areas
	parking lots
	Public parking lots.
	All of the above.
	Downtown, major shopping areas, hospitals
	none
	retail store parking lots
	Schools
	Public parking
	not in private residences
	Churches
	Downtown parking lots
	Shopping Areas
	public parking areas
	Public buildings, like library
	Anywhere. I'm sure the businesses get some kind of tax relief from it
<b>1. What community assets do you travel to most often? - Other responses</b>	
	<b>Answer</b>
	I work and live in the city.
	Doctors etc.
	Office



	work
	work
	Grocery
	Work, entertainment and family/friends visits
	WORK !!!
	Dr , dentist
	Medical offices
	Post Office, UPS Store, City Hall to utilize shipping depots.
	Work
	Medical facilities
	Ymca
	Daycare Center
	work
	Supermarket
	Visiting friends
	Work/volunteering
	work
	Bowling alley
	Work
	employment
	Work
	College/ uni
	work
	Work
	WORK
	YMCA, Grove City, YMCA Urbancrest, Ohio
	Work
	work
	I only visit grocery stores, and local eateries.
	The Y
	daycare
	work
<b>1. What community assets do you travel to most often? - Comments</b>	
	<b>Answer</b>
	Weekly
	Fishing
	More bike paths
	We have a park right down the street from our house so we don't drive there
	Sustainable transportation? During peak times, you can't even get in or out of GC. The amount of time stuck idling in traffic is ridiculous.
	I hate big-name chain restaurants. I dread Stringtown Rd
	Daycare, work, restaurant, and church.
	very impressed with Grove City's expanding multi-purpose trails. Use them daily on my e-bike and regular bicycle for both functional and recreational purposes.
	Trails are great but they are subject to seasonal barriers. For an aging population some form of motor transport from door to door will be necessary to insure mobility.

<b>3. What barriers exist that prevent you from using non-driving modes to travel around Grove City? - Other responses</b>	
	<b>Answer</b>
	too rainy and cold
	too much traffic
	None
	Cota plus is not in my part of town
	Too far to walk & Stringtown Rd is too busy for me to bike, in spite of bike pat
	Cycle Friendly roads, beyond Stringtown
	Laziness
	Most of the bike path and Grove City are in rough shape need to be treated and s
	poor quality bike path
	Local traffic is very aggressive toward cyclists. It's too dangerous.
	Don't feel safe in some areas
	For stores within walking distance of home, too difficult to carry groceries.
	Weather, load weight, load size
	Need markets in community that people can walk to
	No local bus circulator routes or bus shelters.
	Not enough safe bike trails or sidewalks to travel on
	Safe, weather-protected storage of my bike
	Need a bike trail on Orders between Old Haughn and Hoover.
	Connected bike paths lacking, limited restaurant options
	Trails are not lighted
	Not putting my life in danger on these busy roads, distracted drivers!
	Lack of Sidewalks.
	Older areas of Grove City do not have bike trails.
	Not convenient or reliable public transportation
	Time
	Not all roads have side walks. Orders Rd. Is a perfect example.
	Safety
	Grove City, like most cities, isn't designed for non-vehicle traffic.
	Lack of bicycle lanes on streets.
	Golf cart paths and parking
	Have to take kids and groceries along, no place to lock up bikes & gear at most
	KIDS!
	Speeding traffic (City prioritized vehicular traffic over ped. safety/comfort
	Bike Lanes on roads above 25mph
	missing links of sidewalks
	Police
	PICK UP AND DROP OFF POINTS
	Desire
	sidewalks and bike paths require crossing main or busy traffic areas
	Walkability in general is terrible; wish GC had more development mixtures
	lack of safe crossing I71
	older adult

	TIME
	No sidewalks on certain streets like Casa and Ventura.
	Access by bicycle to commercial areas. No safe way to get there.
	there aren't sidewalks everywhere
	Lazy
	No sidewalks
	Pride
	I drive a Prius
	too old
	More sidewalks
	No sidewalks to YMCA from Hover rd
	Bicycle safety concerns and lack of bike paths
	Not safe to bike in neighborhood
	Could always use more bike trails
	weather
	Too dangerous
	Riding a bicycle in Grove City is dangerous due to poorly laid out bike lanes.
	Bicycle friendly sidewalks are hard to come by.
	Bus would require 2 or more hours vs a 20 minute drive.
	No sidewalks
	use bicycle regularly around town. may reduce one car
	Bike paths do not extend down ORDERS ROAD.
	Roads still not very safe for bikes despite marked bike friendly routes
	Bike paths need to connect especially orders road
	Rain, Cold, Snow, Nightfall.
	To much traffic
	need better pedestrian routes that are safe and more direct to locations
	I don't believe merging bicycles or golf carts with motor vehicles is wise. If
	No barrier
	Kids
	Need light rail
	Lack of bike-ways or shared road space
<b>5. How many people currently reside in your household? - Responses</b>	
	<b>Answer</b>
	1
	2
	2
	2
	1
	2
	2
	3
	2
	4
	3
	2

	2
	1
	1
	2
	3
	1
	3
	3
	Two
	5
	3
	2
	Two adults
	5
	6
	1
	3
	1
	3
	4
	4
	2
	Two
	2
	2
	2
	2
	4
	2
	2^^^ Have lived in GC off and on all my life
	2
	3
	2
	3
	2
	5
	Five
	2
	2
	3
	4
	5
	4
	5
	3
	2
	One

	4
	2
	1
	2
	2
	3
	4
	4
	2
	1
	21 years
	4
	4
	2
	7
	1
	Two
	2
	2
	2
	2
	5
	Four
	2
	4
	2
	3
	2
	2
	5
	3
	4
	2
	2
	2
	2
	4
	4
	3
	3
	3
	4
	3
	3
	4
	4
	3

	4
	7
	3
	3
	5
	2
	4
	4
	6
	5
	6
	3
	3
	5
	2
	2
	2
	4
	5
	5
	2
	5
	4
	4
	1
	5
	2
	4
	3
	3
	4
	2
	6
	3
	6
	1 spouse recently passed
	1
	2
	1
	2
	2
	2
	3
	3
	4
	2



	3
	2
	2
	6
	2
	3
	1
	4 including myself
	2
	2
	3
	5
	3
	1
	2
	3
	5
	3
	Two
	2
	3
	4
	4
	2
	2
	1
	1
	2
	3
	Two
	1
	2
	3
	2
	4
	2
	2
	5
	Two adults and two babies.
	2
	3
	4
	2
	2
	3
	4
	2

	3
	4
	2
	4
	4
	2
	4
	4
	5
	02
	3
	Two
	2
	5
	5
	2
	4
	2
	4
	4
	2
	2
	3
	3
	2
	6
	3
	4
	3
	2
	4
	5
	2
	5
	3
	4
	2
	4
	2
	4
	4
	4
	5
	2

	4
	2